

asecos[®]



**WORKING SAFELY
WITH DANGEROUS
MATERIALS:**

STORAGE AND HANDLING



THE WORLD THAT MOVES US

... revolves around storing hazardous materials.

asecos ensures that hazardous substances are appropriately stored and safely handled in our day-to-day working life. The best possible protection of humankind and the environment is our number 1 priority. Driven by this desire, we developed **the first safety storage cabinet with 90-minute fire resistance** for the storage of flammable liquids in 1994. What was a technical revolution in the industry at that time has now become the generally accepted technical standard. asecos products combine quality, innovation and safety for one purpose: to benefit the customer.

asecos is the world's leading manufacturer of safety cabinets in accordance with the European standard DIN EN 14470 Part 1 and Part 2. As experts in the storage, handling and extraction of hazardous materials, we offer our customers **everything from one provider**: Starting with our innovative developments, which are certified according to the highest standards, through in-depth consulting competence of our employees to production and subsequent maintenance. We combine quality and know-how with the claim to offer our customers optimal solutions for their requirements.

In this catalogue you will find a wide range of equipment to make the handling and storage of hazardous substances safer and to simplify the operational process.

Of course, our experts are also available to answer your questions personally.

You will find all contact information at www.asecos.com.



You will find many more products for the safe storage and extraction of hazardous substances in workrooms in our general catalogue „Working safely with hazardous substances: Storage, Extraction, Handling“ at www.asecos.com.

STORAGE & HANDLING OF HAZARDOUS SUBSTANCES – ARE THEY SAFE?

In many companies and laboratories, the use of hazardous substances is part of everyday work and is unavoidable. When hazardous substances are handled in companies, operators and users bear great responsibility for people and the environment.

Improper storage of hazardous substances poses various risks to people, the environment and property:

- Fires and explosions caused by, for example, the improper storage of flammable liquids and gases
- Pollution of soils, groundwater and surface waters through e.g. contaminated extinguishing water or leaks - even one drop of oil can pollute e.g. up to 1,000 litres of water and a "supposedly small" leak can thus lead to ecological damage
- Downtimes or worse, bankruptcy, e.g. due to destroyed buildings, laboratories after fires (after a fire, approx. 80% of companies go bankrupt)
- Risk to human life

But it is not only when storing hazardous substances indoors and outdoors that special measures have to be taken in day-to-day operations; protective measures for people and the environment should also, and especially, be a top priority when it comes to handling. Wherever material is moved, manoeuvred or stored and retrieved, there is an increased risk of damage.

If the goods being transported are also hazardous substances, then more stringent conditions apply. Improper handling or damage to the container can cause uncontrolled leakage of critical substances – often with devastating consequences.

Business owners and company managers must be aware of their responsibility for handling and storing hazardous substances and regularly ask themselves the following questions:

- Do I know the legal regulations for hazardous substances?
- Do I apply these regulations?
- Am I fulfilling my duty of care towards people and the environment?

On the following pages you will find numerous products that make storage and handling of hazardous substances safer and simplify the operational process.



Storage and handling of hazardous materials indoors and outdoors		
Sump pallets from steel	Sump pallets and accessories IBC stations Bunded spill floorings	page 7–15 page 16–17 page 18–19
Sump pallets from PE	Sump pallets Racksumps IBC stations Bunded spill floorings and accessories	page 20–26 page 27 page 28–30 page 31–33
Filling stations and rack systems	Fill and storage station Drum racks Hazardous substances racks	page 34–37 page 38 page 39–45
Hazmat depots	Hazmat depots made from steel Hazmat depots made from PE	page 48–50 page 51–53
Safety containers	Dispensing cans and canisters Storage / transport cans and canisters Filling cans Cleaning containers Disposal container	from page 56 from page 56 page 59 page 60–61 page 62
Gas cylinder storage and handling	Gas cylinder transport and accessories Gas cylinder depots	page 68 page 69
Drum protection and drum handling	Funnel for drums and IBC Grounding cables and drum wenchers Drum accessories, drum funnel, level indicator	page 70–71 page 72 page 73
Pumps	Container pumps Drum pumps	page 74 page 75
Collecting systems	Stacking and multi-purpose container, PE Tipping trolley and tipping skip, PE	page 76–77 page 78–79
Drum transport systems	Drum dolly and drum trolley Drum tongs, drum gripper, drum turner Drum lifter	page 80 page 81–83 page 84–85
Protective profiles	Wall and corner protectors Pillar protection profiles	page 86 page 86
Business equipment	Grit container	page 87
Leakage management	Sorbents Granules Sealant mats and separation barriers	page 88–91 page 92 page 93

The right sump pallet for your application

Which hazardous materials should be stored? The properties of the hazardous material determine the material of the sump pallet:

Storage of flammable substances and/or water pollutants such as oils, varnishes, etc.



Steel sump pallets either in coated or galvanised design

Storage of non-flammable, water pollutants, aggressive substances such as acids and bases



Polyethylene sump pallets

Which containers should be stored?

When storing hazardous materials, the sump pallet must ensure an adequate collection volume. Depending on whether small containers, 60 or 200 litre drums, 1,000 litre containers or different container sizes are supposed to be clustered, the asecos delivery programme offers the right sump pallet

▪ 60-litre containers/drums



▪ 200-litre drums



▪ 1,000-litre containers



Which application is required?

The sump pallet systems offer you maximum flexibility

▪ For placing on the floor or on Euro/chemical pallets



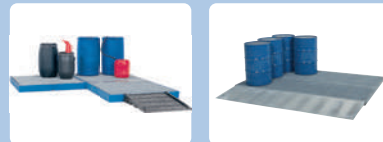
▪ Can be rolled-under with a fork lift or fork lift truck



▪ Can be moved with rollers and push handles



▪ Extensive protection

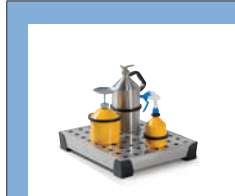


Overview: sump pallet (steel)

For small containers



page 8



page 8



page 9

For 60 litre drums



page 10



page 14

For drums à 200 litres



page 10



page 14



page 11



page 14



page 12



page 12



page 12

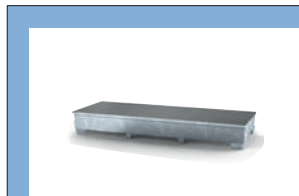
For IBC à 1000 litres



page 16



page 17



page 17

Bunded spill floorings



page 18



page 19



Sump for small containers | Steel | Stainless steel



Order No. 39976

Steel or stainless steel sumps for small containers

Compact and robust design

- Approved for the safe storage of water pollutants and flammable liquids
- Ideal for use in the workplace, e.g. on the workbench
- Sturdy plastic feet protect against corrosion and protect work surfaces and floors

Flexible

- Direct storage in the sump pallet or on the storage level

Optimal corrosion protection

- Made of high-quality powder-coated steel optionally with galvanised perforated insert, or made of stainless steel optionally available with perforated insert made of stainless steel



Order No. 39971



Order No. 39978



Order No. 39982





Order No. 39985



Order No. 39990



Order No. 39994

Type	W x D x H (mm)	 1)	 2)	Storage level	
				without	perforated insert
				Order No.	Order No.
Sump for small containers powder-coated steel	250 x 400 x 95	5	50	39971	39972
Sump for small containers powder-coated steel	250 x 600 x 95	7	50	39973	39974
Sump for small containers powder-coated steel	500 x 400 x 95	10	50	39975	39976
Sump for small containers powder-coated steel	500 x 600 x 95	15	50	39977	39978
Sump for small containers powder-coated steel	987 x 400 x 95	20	100	39979	39980
Sump for small containers powder-coated steel	987 x 600 x 95	30	100	39981	39982
Sump for small containers stainless steel	250 x 400 x 95	5	50	39983	39984
Sump for small containers stainless steel	250 x 600 x 95	7	50	39985	39986
Sump for small containers stainless steel	500 x 400 x 95	10	50	39987	39988
Sump for small containers stainless steel	500 x 600 x 95	15	50	39989	39990
Sump for small containers stainless steel	987 x 400 x 95	20	100	39991	39992
Sump for small containers stainless steel	987 x 600 x 95	30	100	39993	39994

1) capacity (litre), 2) load capacity (kg)



Order No. 40006

Steel sumps for small containers

Compact and robust design

- Approved for the safe storage of water pollutants and flammable liquids
- Ideal for use in the workplace, e.g. on the workbench
- Sturdy plastic feet protect against corrosion and protect work surfaces and floors

Flexible

- Direct storage in the sump pallet or on the storage level

Optimal corrosion protection

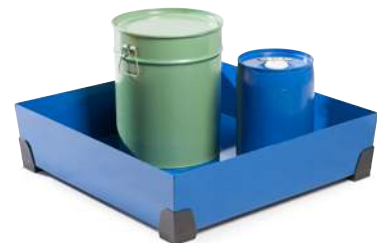
- Made of high-quality powder-coated steel for optimum protection against corrosion, optionally with a grid made of PE or galvanised perforated insert as a shelf



Order No. 39998



Order No. 40002



Order No. 40007





Order No. 40008



Order No. 40004



Order No. 40000

Type	W x D x H (mm)	 1)	 2)	Storage level		
				without	grid	perforated insert
Sump for small containers powder-coated steel	392 x 392 x 200	20	50	39995	39996	39997
Sump for small containers powder-coated steel	584 x 392 x 200	30	75	39998	39999	40000
Sump for small containers powder-coated steel	774 x 392 x 200	40	100	40001	40002	40003
Sump for small containers powder-coated steel	774 x 584 x 200	65	150	40004	40005	40006
Sump for small containers powder-coated steel	774 x 774 x 200	90	200	40007	40008	40009

1) capacity (litre), 2) load capacity (kg)





Order No. 11947

Steel sump pallets

Compact and robust design

- Approved for the safe storage of water pollutants and flammable liquids

Flexible

- Direct storage in the sump pallet or on the grid
- Optimal corrosion protection through high-quality galvanizing or powder coating

Sump with feet

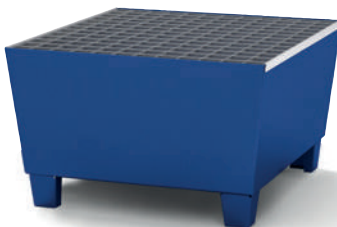
- Easy and safe in-house transport of the empty sump by pallet truck and forklift truck



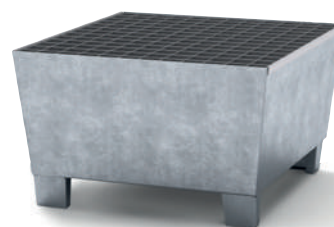
Order No. 11946





Order No. 11942



Order No. 2516



Order No. 2517

Type	W x D x H (mm)	 1)	 2)	Storage level	
				without grid	grid
Sump pallet powder-coated steel	635 x 785 x 178	60	400	11945	11943
Sump pallet steel galvanized	635 x 785 x 178	60	400	11944	11942
Sump pallet powder-coated steel with foot construction	635 x 785 x 278	60	400	11949	11947
Sump pallet steel galvanized with foot construction	635 x 785 x 278	60	400	11948	11946
Sump pallet powder-coated steel with foot construction	815 x 885 x 478	217	400	9844	2516
Sump pallet steel galvanized with foot construction	815 x 885 x 478	217	400	9843	2517

1) capacity (litre), 2) load capacity (kg)



Order No. 2513

Steel sump pallets

Compact and robust design

- Approved for the safe storage of water pollutants and flammable liquids

Flexible

- Direct storage in the sump pallet or on the grid
- Optimal corrosion protection through high-quality galvanizing or powder coating

Sump with feet

- Easy and safe in-house transport of the empty sump by pallet truck and forklift truck



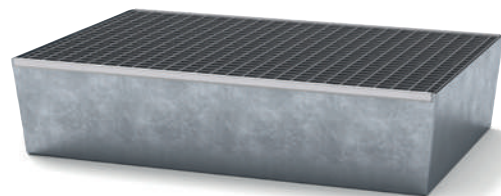
Order No. 2512



Order No. 2508



Order No. 2504



Order No. 2505

Type	W x D x H (mm)	1)	2)	Storage level	
				without grid	grid
Sump pallet powder-coated steel	815 x 1236 x 255	205	800	2500	2504
Sump pallet steel galvanized	815 x 1236 x 255	205	800	2501	2505
Sump pallet powder-coated steel with foot construction	815 x 1236 x 355	205	800	2508	2512
Sump pallet steel galvanized with foot construction	815 x 1236 x 355	205	800	2509	2513

1) capacity (litre), 2) load capacity (kg)





Order No. 2514

Steel sump pallets

Compact and robust design

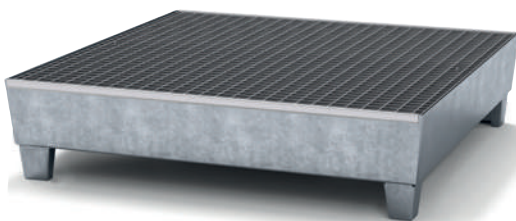
- Approved for the safe storage of water pollutants and flammable liquids

Flexible

- Direct storage in the sump pallet or on the grid
- Optimal corrosion protection through high-quality galvanizing or powder coating

Sump with feet

- Easy and safe in-house transport of the empty sump by pallet truck and forklift truck



Order No. 2515



Order No. 2510



Order No. 2520

Type	W x D x H (mm)	1)	2)	Storage level	
				without	grid
				Order No.	Order No.
Sump pallet powder-coated steel	1210 x 1236 x 290	220	1600	2510	2514
Sump pallet steel galvanized	1210 x 1236 x 290	220	1600	2511	2515
Sump pallet powder-coated steel	815 x 2470 x 250	225	1600	-	2520
Sump pallet steel galvanized	815 x 2470 x 250	225	1600	-	2521
Sump pallet powder-coated steel	816 x 2470 x 355	420	1600	-	23039
Sump pallet steel galvanized	816 x 2470 x 355	420	1600	-	23040
Sump pallet powder-coated steel	1210 x 2455 x 250	340	3200	-	2522
Sump pallet steel galvanized	1210 x 2455 x 250	340	3200	-	2523

1) capacity (litre), 2) load capacity (kg)

Accessories



Drum mount galvanised for 1 x 50/60 litre drum or 200 litres, W x D x H (mm): 600 x 600 x 380
Order No. 2560



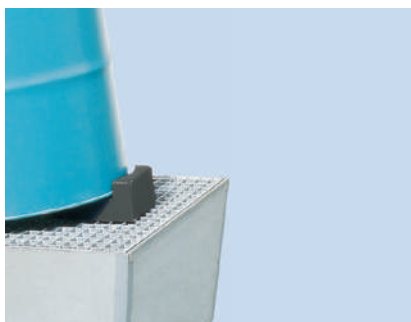
Drum mount galvanised for 2 x 50/60 litre drums or 200 litres, W x D x H (mm): 1160 x 600 x 380
Order No. 2561



Drum mount galvanised for 3 x 50/60 litre drums or 2 x 200 litre drums, W x D x H (mm): 1160 x 600 x 380
Order No. 2562



Drum mount PE, variable for 1 x 60 L drum or 1 x 200 L drum simply turn 180 degrees
W x D x H (mm): 475 x 620 x 390
Order No. 9875



Barrel wedge PE enables 200 litre steel and plastic barrels to be placed at an angle optimal emptying of the barrel possible by means of a pump W x D x H (mm): 217 x 214 x 97
Order No. 12124



Loading safety set for mobile 2-drum trough with grid
Set consisting of safety tensioning strap and holder for 2 drums
Order No. 34829



SpillGuard

- Leak recognition system for ATEX zone 0
 - Highly resistant and electrically conductive housing
 - Reliably detects dangerous leaks
 - Acoustic and optical alarm for min. 24 hours in case of contact with hazardous liquid substances
 - Regular optical signal (red LED) indicates safe function
 - Acoustic signal indicates the need for replacement in good time at the end of the service life (up to 5 years)
 - ATEX marking: EX II 1G Ex ia IIC T4 Ga
 - External dimensions ØxH (mm): 110 x 40
- Order No. 39036**



Sump pallet | Steel | movable



Order No. 2558

Movable steel sump pallets

Compact and robust design

- Approved for the safe storage of water pollutants and flammable liquids

Flexible

- Direct storage in the sump pallet or on the grid
- Optimal corrosion protection through high-quality galvanizing or powder coating

Mobile version

- Movable with castors made of polyamide
- Handle for convenient internal transport



Order No. 2557



Order No. 2556



Order No. 14302



Order No. 22746

Type	W x D x H (mm)	1)	2)	Storage level	
				without grid	grid
Sump pallet powder-coated steel with castors	1275 x 635 x 890	65	300	23041	14302
Sump pallet steel galvanized with castors	1275 x 635 x 890	65	300	23042	22476
Sump pallet powder-coated steel with castors	1350 x 815 x 995	217	400	-	2556
Sump pallet steel galvanized with castors	1350 x 815 x 995	217	400	-	2555
Sump pallet powder-coated steel with castors	1700 x 815 x 995	217	800	-	2558
Sump pallet steel galvanized with castors	1700 x 815 x 995	217	800	-	2557

1) capacity (litre), 2) load capacity (kg)



Steel sump pallet

Compact and robust design

- Approved for the safe storage of water pollutants and flammable liquids

Flexible

- Direct storage in the sump pallet or on the grid
- Optimal corrosion protection through high-quality galvanizing or powder coating

Mobile version

- Movable with electrically conductive castors
- Handle for convenient internal transport

Order No. 40016



Order No. 40017



Order No. 40012



Order No. 40014



Order No. 40013

Type	W x D x H (mm)	1)	2)	Storage level	
				without	grid
Sump pallet powder-coated steel with castors, electrically conductive castors from PP	1275 x 635 x 890	65	300	40010	40012
Sump pallet steel galvanized with castors, electrically conductive castors from PP	1275 x 635 x 890	65	300	40011	40013
Sump pallet powder-coated steel with castors, electrically conductive castors from PP	1350 x 815 x 995	217	400	-	40014
Sump pallet steel galvanized with castors, electrically conductive castors from PP	1350 x 815 x 995	217	400	-	40015
Sump pallet powder-coated steel with castors, electrically conductive castors from PP	1700 x 815 x 995	205	800	-	40016
Sump pallet steel galvanized with castors, electrically conductive castors from PP	1700 x 815 x 995	205	800	-	40017

1) capacity (litre), 2) load capacity (kg)



Sump pallet | Steel | for KTC/IBC



Order No. 8808

Steel sump pallet

Compact and robust design

- Approved for the safe storage of water pollutants

Flexible

- Ideal for the storage of IBC
- Polyethylene sump inliner optionally available, optimum corrosion protection when storing aggressive materials
- Useable as filling and dispensing station in combination with drum mount (sumps without grid)
- Available either painted or galvanised

Sump with feet

- Easy and safe in-house transport of the empty sump by pallet truck and forklift truck



Order No. 19232



Order No. 8856



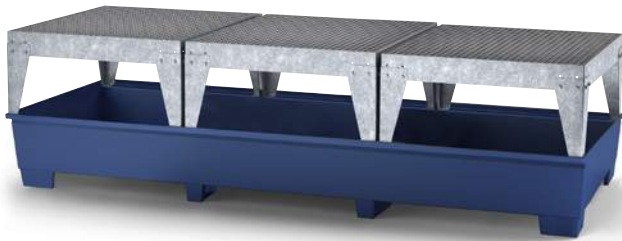
Order no. 8853



Order no. 2577

Type	W x D x H (mm)	W x D x H (mm) incl. filling rack	1)	2)	Filling rack	
					without	1x
KTC/IBC station powder-coated steel	1350 x 1650 x 710	1350 x 1650 x 1180	1000	2000	19232	8809
KTC/IBC station steel galvanized	1350 x 1650 x 710	1350 x 1650 x 1180	1000	2000	13626	8857
Sump inliner for IBC station	1230 x 1630 x 565				2577	2577
Can tray for IBC station	360 x 365 x 300				-	8853
KTC/IBC station powder-coated steel	1300 x 1120 x 1040	1120 x 1300 x 1493	1000	2000	8854	8856
KTC/IBC station steel galvanized	1300 x 1120 x 1040	1120 x 1300 x 1493	1000	2000	8807	8808
Sump inliner for IBC station	1107 x 1162 x 883				8855	8855
Can tray for IBC station	364 x 452 x 374				-	40018

1) capacity (litre), 2) load capacity (kg)



Order No. 23048

Steel sump pallet

Compact and robust design

- Approved for the safe storage of water pollutants

Flexible

- Ideal for the storage of IBC
- Polyethylene sump inliner optionally available, optimum corrosion protection when storing aggressive materials
- Useable as filling and dispensing station in combination with drum mount (sumps without grid)
- Available either painted or galvanised

Sump with feet

- Easy and safe in-house transport of the empty sump by pallet truck and forklift truck



Order No. 8851



Order No. 22578



Order No. 40019



Order no. 9212

Type	W x D x H (mm)	W x D x H (mm) incl. filling rack	1)	2)	Filling rack			
					without	1x	2x	3x
					Order No.	Order No.	Order No.	Order No.
KTC/IBC station powder-coated steel	2200 x 1300 x 590	2200 x 1300 x 1050	1000	4000	8851	25577	22579	-
KTC/IBC station steel galvanized	2200 x 1300 x 590	2200 x 1300 x 1050	1000	4000	8806	22578	12169	-
Sump inliner for IBC station	2186 x 1161 x 435				9212	9212	9212	9212
KTC/IBC station powder-coated steel	3280 x 1300 x 430	3280 x 1300 x 883	1000	6000	23043	23044	23046	23048
KTC/IBC station steel galvanized	3280 x 1300 x 430	3280 x 1300 x 883	1000	6000	22623	23045	23047	23049
Sump inliner for IBC station	3265 x 1160 x 275				40019	40019	40019	40019
Can tray for IBC station	364 x 452 x 374				-	40018	40018	40018

1) capacity (litre), 2) load capacity (kg)



Bunded spill floorings | galvanised steel | height 78 mm

Bunded spill flooring made from galvanised steel (height 78 mm) with removable, hot-dip galvanised grids



Compact and robust design – safe and approved

- Approved for the safe storage of water pollutants and flammable liquids

Flexible

- Ideal for covering a large storage area, optimal adaption on space demands
- Height 78 mm – easy access
- Wheel load either 450 kg or 2,000 kg



Type	W x D x H (mm)	 1)	 2)	Wheel load	
				450 kg Order No.	2000 kg Order No.
Bunded spill flooring steel galvanised with galvanised grid	1362 x 1362 x 78	80	5000	2583	17758
Bunded spill flooring steel galvanised with galvanised grid	1862 x 1362 x 78	110	5000	2584	14949
Bunded spill flooring steel galvanised with galvanised grid	1862 x 1862 x 78	140	5000	27965	27966
Bunded spill flooring steel galvanised with galvanised grid	2862 x 1362 x 78	170	5000	2585	10536
Bunded spill flooring steel galvanised with galvanised grid	2862 x 1862 x 78	225	5000	2586	14491

1) capacity (litre), 2) load capacity (kg)

Accessories	W x D x H (mm)	Order No.
Joining element	1320 x 45 x 40	2587
Joining element	1820 x 45 x 40	2588
Joining element	2820 x 45 x 40	2589
Ramp	1320 x 720 x 78	2590
Ramp	1820 x 720 x 78	2591
Ramp	2820 x 720 x 78	2592
Corner ramp	730 x 730 x 78	2596
Distance joinder	25 x 120 x 77	2593
Edge fastening	20 x 80 x 73	2594
Rack system	130 x 130	2595

Bunded spill floorings | galvanised steel | height 123 mm

Bunded spill flooring made from galvanised steel (height 123 mm) with removable, hot-dip galvanised grids



Compact and robust design – safe and approved

- Approved for the safe storage of water pollutants and flammable liquids

Flexible

- Ideal for covering a large storage area, optimal adaption on space demands
- Height 123 mm – large collecting volume
- Wheel load either 450 kg or 2,000 kg



Type	W x D x H (mm)	 1)	 2)	Wheel load	
				450 kg Order No.	2000 kg Order No.
Bunded spill flooring steel galvanized with galvanised grid	500 x 500 x 123	20	5000	8810	23064
Bunded spill flooring steel galvanized with galvanised grid	1000 x 500 x 123	40	5000	8811	23065
Bunded spill flooring steel galvanized with galvanised grid	1000 x 1000 x 123	80	5000	8812	17303
Bunded spill flooring steel galvanized with galvanised grid	2000 x 1000 x 123	165	5000	8813	10479
Bunded spill flooring steel galvanized with galvanised grid	2500 x 500 x 123	95	5000	8814	23066
Bunded spill flooring steel galvanized with galvanised grid	2500 x 1000 x 123	210	5000	8815	23067

1) capacity (litre), 2) load capacity (kg)

Accessories	W x D x H (mm)	Order No.
Joining element	470 x 45 x 40	8816
Joining element	970 x 45 x 40	8817
Joining element	1970 x 45 x 40	8818
Joining element	2470 x 45 x 40	8819
Ramp	450 x 1120 x 125	8820
Ramp	950 x 1120 x 125	8821
Ramp	1950 x 1120 x 125	8822
Ramp	2450 x 1120 x 125	8823
Distance Joiner	25 x 120 x 123	8824
Edge fastening	20 x 80 x 123	8825
Corner ramp	1140 x 1140 x 125	8826
Rack system	130 x 130	2595



Overview: sump pallet (PE)

For small containers



page 21



page 22



page 23



page 23



page 23

For drums à 200 litres



page 24



page 24



page 25



page 26



page 24



page 25



page 26



page 26

Pallet-racking-sumps



page 27



page 27



page 27



page 27

For IBC à 1,000 litres



page 28



page 29



page 28



page 30

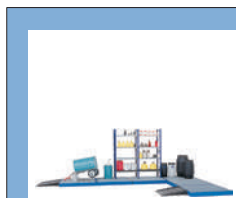


page 29

Bunded spill floorings



page 31



page 31

Sump for small containers | Polyethylene



Polyethylene sump for small containers

Compact and robust design

- Approved for the safe storage of water pollutants
- Ideal for use in the workplace, e.g. on the workbench

Highly resistant against oil, acid, alkali, etc.

- Made of chemically highly resistant polyethylene
- Optionally available with PE grid including leakage indicator

Order No. 40037



Order No. 40033





Order No. 40039



Order No. 40034



Order No. 40040

Type	W x D x H (mm)	 ¹⁾	 ²⁾	Order No.
Sump for small containers PE	995 x 395 x 90	20	200	40033
Grid with leakage indicator				40034
Sump for small containers PE	1265 x 395 x 90	26	200	40035
Grid with leakage indicator				40036
Sump for small containers PE	995 x 595 x 90	30	200	40037
Grid with leakage indicator				40038
Sump for small containers PE	1265 x 595 x 90	40	200	40039
Grid with leakage indicator				40040

1) capacity (litre), 2) load capacity (kg)



Sump for small containers | Polyethylene



Order No. 40028

Polyethylene sump for small containers

Compact and robust design

- Approved for the safe storage of water pollutants
- Ideal for use in the workplace, e.g. on the workbench

Highly resistant against oil, acid, alkali, etc.

- Made of chemically highly resistant polyethylene. Optionally available with PE grid including leakage indicator



Order No. 40030





Order No. 40024



Order No. 40031



Order No. 40023

Type	W x D x H (mm)	 1)	 2)	Storage level	
				without Order No.	grid Order No.
Sump for small containers PE	400 x 400 x 180	20	50	40021	40022
Sump for small containers PE	592 x 400 x 180	30	75	40023	40024
Sump for small containers PE	784 x 400 x 180	40	100	40025	40026
Sump for small containers PE	784 x 784 x 180	80	200	40027	40028
Sump for small containers PE	1170 x 785 x 180	120	300	40029	40030
Sump for small containers PE	1168 x 1168 x 180	180	450	40031	40032

1) capacity (litre), 2) load capacity (kg)

Sump pallet | Polyethylene



Order No. 18074



Order No. 18447

Polyethylene sump pallets

Compact and robust design

- Approved for the safe storage of water pollutants

Highly resistant against oil, acid, alkali, etc.

- Optionally available with galvanized grid or PE grid
- Sump pallet for direct placing on the floor or Euro-Pallet

Sump with feet

- Ideal for in-house transport of the empty sump pallet

Mobile version

- Movable with 2 swivel castors and 2 fixed castors, castors made of polyamide
- Handle for convenient internal transport



Order No. 18073



Order No. 18076



Order No. 18077

Type	W x D x H (mm)	1)	2)	Storage level		
				without Grid	Grid galvanised	Grid PE
Sump pallet PE	725 x 525 x 235	60	150	18447	18448	18449
Sump pallet PE with foot construction	725 x 525 x 320	60	150	18073	18074	18075
Sump pallet PE with castors	725 x 525 x 330	60	120	18076	18077	18078

1) capacity (litre), 2) load capacity (kg)



Sump pallet | Polyethylene



Order No. 33054

Polyethylene sump pallets

Compact and robust design

- Approved for the safe storage of water pollutants

Highly resistant against oil, acid, alkali, etc.

- Optionally available with galvanized grid or PE grid

Flat surface design

- For an easy and comfortable storage of drums
- Robust construction, shock resistant

Forklift pockets

- Easy and safe in-house transport of the empty sump by forklift truck

Mobile version

- Movable with 2 swivel castors and 2 fixed castors, castors made of polyamide
- Handle for convenient internal transport



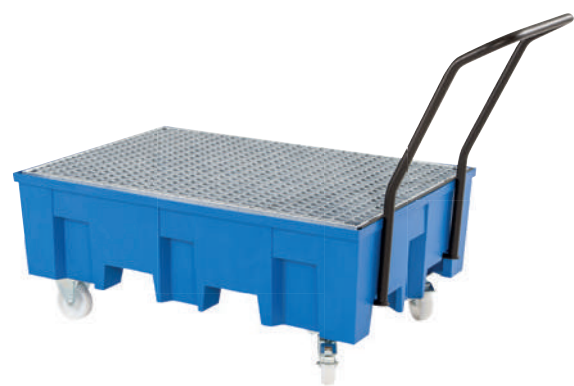
Order No. 33055



Order No. 31861



Order No. 33056



Order No. 33057

Type	W x D x H (mm)	1)	2)	Storage level		
				without	Grid galvanised	Grid PE
Sump pallet PE	865 x 1245 x 350	220	760	33052	33054	33055
Sump pallet PE with castors	865 x 1245 x 1060	220	620	33056	33057	33059
Sump pallet PE	1235 x 1235 x 275	255	950	31860	31861	31862

1) capacity (litre), 2) load capacity (kg)



Order No. 40045

Polyethylene sump pallets

Compact and robust design

- Approved for the safe storage of water pollutants
- Extremely stable supports for grids or pallets molded into the sump body

Highly resistant against oil, acid, alkali, etc.

- Optionally available with galvanized grid or PE grid

Forklift pockets

- Easy and safe in-house transport of the empty sump by forklift truck



Order No. 40044





Order No. 40046



Order No. 40050



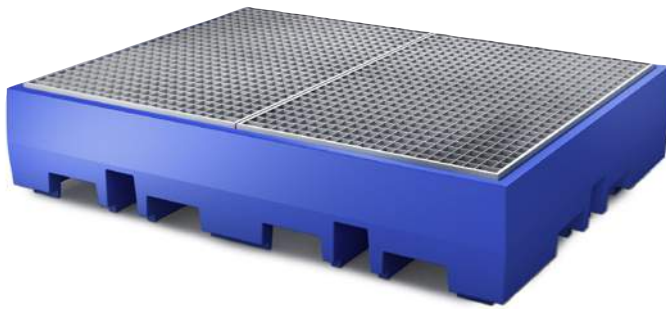
Order No. 40049

Type	W x D x H (mm)	 1)	 2)	Storage level			
				without Grid	Grid galvanised	Grid PE	Pallet PE
Sump pallet PE	1330 x 930 x 385	220	800	40044	40045	40046	40047
Sump pallet PE	1330 x 1330 x 295	220	1600	40048	40049	40050	40051

1) capacity (litre), 2) load capacity (kg)



Sump pallet | Polyethylene



Order No. 40042

Polyethylene sump pallets

Compact and robust design

- Approved for the safe storage of water pollutants

Highly resistant against oil, acid, alkali, etc.

- Optionally available with galvanized grid or PE grid

Forklift pockets

- Easy and safe in-house transport of the empty sump by forklift truck

Models 40052 and 40053

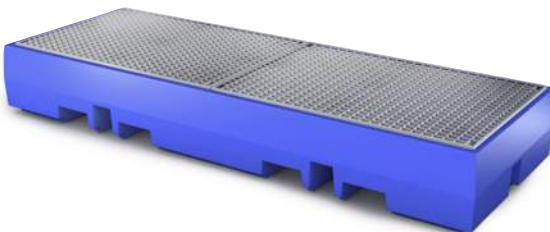
- incl. PE grid with integrated leakage indicator



Order No. 40043



Order No. 40053



Order No. 39195



Order No. 40052

Type	W x D x H (mm)	1)	2)	Storage level		
				without. Grid galvanised	Grid PE	Grid PE
				Order No.	Order No.	Order No.
Sump pallet PE	2520 x 900 x 350	520	1200	39194	39195	39196
Sump pallet PE	1720 x 1300 x 350	440	1200	40041	40042	40043
Sump pallet PE	918 x 1314 x 400	220	800	-	-	40052
Sump pallet PE	1314 x 1349 x 400	340	1600	-	-	40053

1) capacity (litre), 2) load capacity (kg)



Order No. 31404

Polyethylene pallet racking sums

Compact and robust design

- Approved for the safe storage of water pollutants

Flexible

- Useable for all common rack widths, used for the storage of hazardous materials and therefore shall be modified according to the legal regulations

Highly resistant against oil, acid, alkali, etc.

Forklift pockets

- Easy and safe in-house transport of the empty sump by forklift truck

Sump for mounting

- For placing on crossbars
- Either available with galvanised or polyethylene grid



Order No. 31407



Order No. 31411



Order No. 31409



Order No. 22460

Type	W x D x H (mm)	1)	2)	Storage level		
				without Grid galvanised	Grid PE	
				Order No.	Order No.	Order No.
Rack sump PE	1390 x 1315 x 315	315		31404	-	-
Rack sump PE	1780 x 1315 x 315	400		31406	-	-
Rack sump PE	2180 x 1315 x 315	480		31407	-	-
Rack sump PE	2680 x 1315 x 315	600		31408	-	-
Rack sump PE	2680 x 1315 x 490	1000		31409	-	-
Rack sump PE for mounting	1780 x 1300 x 250	220	800	-	31410	22459
Rack sump PE for mounting	2680 x 1300 x 190	220	800	-	22460	31411

1) capacity (litre), 2) load capacity (kg)

Note to 22459 and 31411: Load capacity applies when containers are stored on pallets



Sump pallet | Polyethylene | for IBC



Order No. 15477

Polyethylene sump pallets

Compact and robust design

- Approved for the safe storage of water pollutants

Highly resistant against oil, acid, alkali, etc.

Forklift pockets

- Easy and safe in-house transport of the empty sump by forklift truck

Models 13054 and 13055

- Optionally with integrated dispensing area
- Integrated polyethylene storage mount with upturned edges to prevent IBC from slipping

Models 15477, 15479 and 15480

- Ideal for storing 1,000 litre IBC or small containers
- Optionally with an integrated pallet shape storage platform made of polyethylene
- 2,000 kg load capacity per storage area depending on the self-weight of the container
- Ideal suited for storing liquids with a maximum specific weight of up to 1,800 kg/m³



Order No. 13054



Order No. 15480

Type	W x D x H (mm)	1)	2)	Storage level		
				without	Pallet PE	Bearing block
				Order No.	Order No.	Order No.
IBC station PE	1380 x 1575 x 760	1000	2000	-	-	13054
IBC station PE with filling area	1380 x 1800 x 760	1000	2000	-	-	13055
IBC station PE	1430 x 1430 x 965	1000	2000	-	15477	-
IBC station PE	2260 x 1430 x 720	1000	4000	15479	15480	-

1) capacity (litre), 2) load capacity (kg)



Order No. 24151



Order No. 24158



Order No. 24155



Order No. 40054



Order No. 24157

Polyethylene sump pallets

Compact and robust design



- Approved for the safe storage of water pollutants
- Optionally with integrated dispensing area

Highly resistant against oil, acid, alkali, etc.

Forklift pockets

- Easy and safe in-house transport of the empty sump by forklift truck



Type	W x D x H (mm)	 1)	 2)	Storage level		
				without Grid galvanised	Grid PE	Grid PE
				Order No.	Order No.	Order No.
IBC station PE	1280 x 1660 x 870	1000	2000	24150	24151	24154
IBC station PE with filling area	1280 x 1910 x 860	1000	2000	24155	24156	24157
IBC station PE with filling area	2460 x 1800 x 460	1000	4000	24158	24159	24160
IBC station PE with filling area	3640 x 1800 x 450	1000	6000	38509	40054	33570

1) capacity (litre), 2) load capacity (kg)

Sump pallet | Polyethylene | for IBC



Order No. 38650

Polyethylene sump pallets

Compact and robust design

- Approved for the safe storage of water pollutants
- Complete corrosion protection

Highly resistant against oil, acid, alkali, etc.

Forklift pockets

- Easy and safe in-house transport of the empty sump by forklift truck



Order No. 38648



Order No. 38647



Order No. 38649

Type	W x D x H (mm)	1)	2)	Storage level	
				Grid galvanised	Grid PE
IBC station PE	1370 x 1980 x 690	1000	2000	38647	38648
IBC station PE	2530 x 1320 x 580	1000	4000	38649	38650

1) capacity (litre), 2) load capacity (kg)

Bunded spill floorings | Polyethylene | Height 150 mm

Compact and robust design – safe and approved

- Approved for the safe storage of water pollutants

Flexible

- Ideal for covering a large storage area
- High resistance against chemicals
- Height 150 mm – large collecting volume
- Optionally available with galvanised or polyethylene grid
- Ramps for wheel loads up to 150 kg



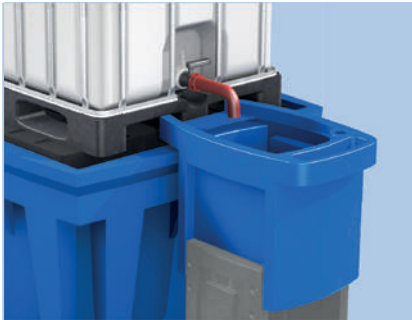
Type	W x D x H (mm)	1)	2)	Storage level	
				Grid galvanised Order No.	Grid PE Order No.
Bunded spill flooring PE	790 x 790 x 150	60	800	31394	31395
Bunded spill flooring PE	1500 x 790 x 150	125	800	17301	19234
Bunded spill flooring PE	1500 x 1500 x 150	220	800	8827	8684
Bunded spill flooring PE	2200 x 790 x 150	170	800	31396	31397
Bunded spill flooring PE	2200 x 1500 x 150	355	800	19235	19236
Bunded spill flooring PE	3000 x 790 x 150	235	800	31398	31399
Bunded spill flooring PE	3000 x 1500 x 150	400	800	8828	8829

1) capacity (litre), 2) load capacity (kg)

Accessories	W x D x H (mm)	Order No.
Ramp PE	790 x 1000 x 150	31400
Ramp PE		8832
Ramp PE	1090 x 1000 x 150	31401
Ramp PE	1490 x 1000 x 150	31402
Corner ramp PE	1000 x 1000 x 150	31403
Joining element length 720 mm		23068
Joining element length 1420 mm		8685
Joining element length 2120 mm		23069
Joining element length 2920 mm		8830
Distance joinder		11262
Cross joinder		8831
Edge fastener		8701



Accessories



Attachment container made of PE for IBC sump pallets

- Height adjustable with 2 legs
- Safe and clean dispensing

Container dimensions:

W x D x H (mm): 350 x 400 x 500

W x D (mm) outside: 605 x 785

Order No. 40055



Attachment container made of PE for IBC sump pallets

- With 2 feet
- Safe and clean dispensing
- With trays for lids, funnels, rags etc.

Container dimensions:

W x D (mm) outside: 605 x 785

Order No. 40056



Outlet extension for IBC

- Suitable for IBC's with an outlet opening of DN 50

- Internal thread DIN 61

Order No. 9891



Drum mount galvanised for 1 x 50/60

litre drum or 200 litres, W x D x H (mm):

600 x 600 x 380

Order No. 2560



Drum mount galvanised for 2 x 50/60

litre drums or 200 litres, W x D x H (mm):

1160 x 600 x 380

Order No. 2561



Drum mount galvanised for 3 x 50/60

litre drums or 2 x 200 litre drums,

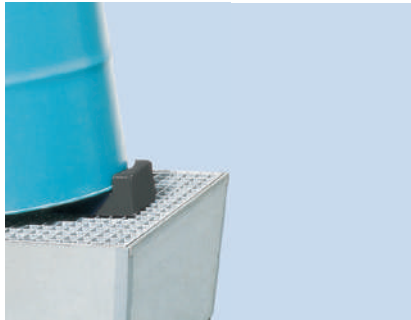
W x D x H (mm): 1160 x 600 x 380

Order No. 2562

Accessories



Drum mount PE, variable for 1 x 60 L drum or 1 x 200 L drum
simply turn 180 degrees
W x D x H (mm): 475 x 620 x 390
Order No. 9875



Barrel wedge PE enables 200 litre steel and plastic barrels to be placed at an angle optimal emptying of the barrel possible by means of a pump
W x D x H (mm): 217 x 214 x 97
Order No. 12124



Loading safety set for mobile 2-drum trough with grid
Set consisting of safety tensioning strap and holder for 2 drums
Order No. 34829



Drum pallet PE for horizontal storage of 2 drums à 200 litres
Easy forklift transport due to integrated fork pockets
Stackable
W x D x H (mm): 1300 x 790 x 300
Order No. 2678



SpillGuard

- Leak recognition system for ATEX zone 0
 - Highly resistant and electrically conductive housing
 - Reliably detects dangerous leaks
 - Acoustic and optical alarm for min. 24 hours in case of contact with hazardous liquid substances
 - Regular optical signal (red LED) indicates safe function
 - Acoustic signal indicates the need for replacement in good time at the end of the service life (up to 5 years)
 - ATEX marking: EX II 1G Ex ia IIC T4 Ga
 - External dimensions ØxH (mm): 110 x 40
- Order No. 39036**



Fill and storage stations



Filling/storage station

with PE collecting tray
storage of substances hazardous to water of all hazard classes



page 36

Filling/storage station

with steel collecting tray
Storage of substances hazardous to water and flammable substances of all hazard classes



page 36

Drum racks – safe storage and filling

with PE collecting tray
storage of substances hazardous to water of all hazard classes



page 38

Drum racks – safe storage and filling

with steel collecting tray
Storage of substances hazardous to water and flammable substances of all hazard classes



page 38



Fill and storage stations | steel | stackable



Order No. 2692

Filling and storage station made from steel, 3 times stackable

Safe and approved

- For the storage of flammable liquids and water pollutants (steel sump)
- For the storage of water pollutants (PE sump)

Flexible

- Stacking rack can be transported using a forklift truck
- Safe dispensing due to overhanging collecting sump





Order No. 2695







Order No. 2699



Order No. 9857

Sump pallet accessible from underneath		W x D x H (mm)	 ¹⁾	 ²⁾	Order No.
Fill and storage station for 2 x 200 litre drum		870 x 1340 x 1860	350	2695	
Fill and storage station for 3 x 60 litre drum + 2 x 200 litre drum		1340 x 1260 x 1810		2692	

Sump pallet steel		W x D x H (mm)	 ¹⁾	 ²⁾	Order No.
Fill and storage station for 2 x 200 litre drum		870 x 1240 x 1535		9845	
Fill and storage station for 3 x 60 litre drum + 2 x 200 litre drum		1370 x 1240 x 1670		2699	
Fill and storage station for 3 x 60 litre drum + small containers		1370 x 1240 x 1535		2700	

Sump pallet PE accessible from underneath		W x D x H (mm)	 ¹⁾	 ²⁾	Order No.
Fill and storage station for 3 x 60 litre drum + 2 x 200 litre drum		1370 x 1240 x 1535		9857	
Fill and storage station for 4 x 200 litre drum		1370 x 1240 x 1535	350	9859	

1) load capacity per drum platform (kg), 2) bay load (kg)

Stacking rack | steel | stackable 3 times



Order No. 2693

Add-on racks for filling/storage station made of steel, stackable 3 times.

- Ideal for supplementing/expanding existing storage stations
- Robust steel construction, galvanised
- Stackable 3 times
- Delivered disassembled, with assembly instructions



Order No. 2696



Order No. 15959



Order no. 2698





Order No. 2694



Order No. 22753



Order no. 8959

Type	W x D x H (mm)	 ¹⁾	 ²⁾	Order No.
Stacking rack for small containers	870 x 1120 x 790		435	22753
Stacking rack for small containers	1370 x 1120 x 790		410	10888
Stacking rack for 3 x 30 or 2 x 60 litre canister	870 x 640 x 790	225	240	27828
Stacking rack for 4 x 30 or 3 x 60 litre canister	1370 x 640 x 790	225	360	15959
Stacking rack for 1 x 200 litre drum	870 x 640 x 790	225	350	2696
Stacking rack for 2 x 200 litre drum	1370 x 640 x 790	225	700	2693
Stacking rack for 3 x 60 litre drum	1370 x 640 x 790	225	360	2694
Can tray steel galvanized	280 x 270 x 300			2698
Can tray PE	270 x 270 x 300			8959

1) load capacity per drum platform (kg), 2) bay load (kg)



Drum rack



Order No. 13246

Drum racks

Approved and safe

- Steel sumps for the storage of oil, paint and lacquer
- Polyethylene sumps for the storage of acids, alkalis and further aggressiv chemicals
- Safe dispensing due to overhanging collecting sump



Order No. 13148



Order No. 13244



Order No. 13137

Type	W x D x H (mm)	1)	2)	Sump pallet	
				Steel Order No.	Polyethylene Order No.
Drum rack for 2 x 60 litre drum	755 x 635 x 1570	65	120	13148	13244
Drum rack for 3 x 60 litre drum	755 x 635 x 1570	65	120	13146	13147
Drum rack for 6 x 60 litre drum	1330 x 815 x 1570	205	120	13089	13137
Drum rack for 9 x 60 litre drum	1330 x 815 x 1570	205	120	13246	13126

1) Collecting volume (litres), 2) Load capacity per drum support (kg)

Hazardous substances rack type REG

- storage of flammable liquids and water pollutants
- grid shelves as storage levels / steel sump on lower level



page 40

Hazardous substances rack type REG-B

- storage of flammable liquids and water pollutants
- grid shelves as storage levels / rack placed in the steel sump



page 41

Hazardous substances rack type RWW

- storage of water pollutants
- steel sump on each storage level



page 42

Hazardous substances rack type RWG/RWF

- storage of flammable liquids and water pollutants
- shelves or grids as storage levels / rack placed in the steel sump



page 43

Hazardous substances rack type RSG-V und RSG-K

- storage of aggressive chemicals
- galvanised or polyethylene grid shelves as storage levels / polyethylene sump on lower level



page 44

Hazardous substances rack type RSW

- storage of aggressive chemicals
- polyethylene sump on each storage level



page 45

Type index for hazardous substances racks

RWW Shelf with 4 steel trays
REG Shelf with 3 mesh shelves and 1 steel tray
REG-B Shelf with 4 mesh shelves and 1 steel base tray
RSG-V Shelving with 3 galvanised mesh shelves and 1 PE base tray
RSG-K Shelf with 3 PE grating shelves and 1 PE base tray
RSW Shelf with 4 PE trays
RWG Shelving with 4 or 8 galvanised gratings, shelving in steel drip tray
RWF Shelving with 4 or 8 galvanised shelves, shelf in steel drip tray
1044 Shelf width 1000 mm, shelf depth 400 mm

1064 Shelf width 1000 mm, shelf depth 600 mm
1344 Shelf width 1300 mm, shelf depth 400 mm
1364 Shelf width 1300 mm, shelf depth 650 mm



Hazardous material racks | with grids



Order No. 27841



Order No. 27837



Hazardous substances rack with grids

Storage of water pollutant and flammable liquids

Construction

- Galvanised rack frames
- Sturdy construction due to reinforcement cross bars
- Storage levels in 25 mm increments, height-adjustable
- Load capacity per storage shelf: 200 kg (evenly distributed)
- Rack system can be extended individually
- Flat-pack delivery with assembly instructions

Interior equipment

- 3 galvanised grids as storage levels and 1 bottom collecting sump made of galvanised steel

Type	Capacity (l)	Basic rack W x D x H (mm)	Order No.	Add-on rack W x D x H (mm)	Order No.
REG 1044	20	1060 x 437 x 2000	27837	1012 x 437 x 2000	27838
REG 1064	30	1060 x 637 x 2000	27839	1012 x 637 x 2000	27840
REG 1344	25	1360 x 437 x 2000	27841	1312 x 437 x 2000	27842
REG 1364	40	1360 x 637 x 2000	27843	1312 x 637 x 2000	27844

Additional storage level for type	Order No.	Order No.
Version 1044 / 1054	27877	27877
Version 1064 / 1072 / 2064	27878	27878
Version 1344 / 1352	27879	27879
Version 1364 / 1372	27880	27880

Hazardous material racks | with grids



Order No. 27849

Hazardous substances rack with grids and bottom collecting sump

Storage of water pollutant and flammable liquids

Construction

- Galvanised rack frames
- Sturdy construction due to reinforcement cross bars
- Storage levels in 25 mm increments, height-adjustable
- Load capacity per storage shelf: 200 kg (evenly distributed)
- Rack system can be extended individually
- Flat-pack delivery with assembly instructions

Interior equipment

- 4 galvanised grids as storage levels and 1 bottom collecting sump made of galvanised steel



Order No. 27845



Type	Capacity (l)	Basic rack W x D x H (mm)	Order No.	Add-on rack W x D x H (mm)	Order No.
REG-B 1054	32	1156 x 526 x 2000	27845	1006 x 526 x 2000	27846
REG-B 1072	45	1156 x 726 x 2000	27847	1006 x 726 x 2000	27848
REG-B 1354	41	1456 x 526 x 2000	27849	1306 x 526 x 2000	27850
REG-B 1372	57	1456 x 726 x 2000	27851	1306 x 726 x 2000	27852

Additional storage level for type	Order No.	Order No.
Version 1044 / 1054	27877	27877
Version 1064 / 1072 / 2064	27878	27878
Version 1344 / 1352	27879	27879
Version 1364 / 1372	27880	27880



Hazardous material racks | with sump pallet



Order No. 27833

Hazardous substances rack with sumps

Storage of water pollutant liquids

Construction

- Galvanised rack frames
- Sturdy construction due to reinforcement cross bars
- Storage levels in 25 mm increments, height-adjustable
- Load capacity per storage shelf: 200 kg (evenly distributed)
- Rack system can be extended individually
- Flat-pack delivery with assembly instructions

Interior equipment

- 4 painted sumps made of steel as storage levels



Order No. 27829



Type	Capacity (l)	Basic rack W x D x H (mm)	Order No.	Add-on rack W x D x H (mm)	Order No.
RWW 1044	20	1060 x 437 x 2000	27829	1012 x 437 x 2000	27830
RWW 1064	30	1060 x 637 x 2000	27831	1012 x 637 x 2000	27832
RWW 1344	25	1360 x 437 x 2000	27833	1312 x 437 x 2000	27834
RWW 1364	40	1360 x 637 x 2000	27835	1312 x 637 x 2000	27836

Additional storage level for type	Order No.	Order No.
Version 1044	27873	27873
Version 1064	27874	27874
Version 1344	27875	27875
Version 1364	27876	27876

Hazardous material racks | with sump pallet



Order No. 27869



Order No. 27867

Hazardous substances rack with sumps

Storage of water pollutant and flammable liquids

Construction


- Galvanised rack frames
- Sturdy construction due to reinforcement cross bars
- Storage levels in 25 mm increments, height-adjustable
- Load capacity per storage shelf: 200 kg (evenly distributed)
- Rack system can be extended individually
- Flat-pack delivery with assembly instructions

Interior equipment

- Rack with galvanised grid or shelves as storage levels
- Collecting sumps either galvanised or painted
- 100 mm ground clearance for transport with pallet truck
- Version with shelves: storage of water pollutant liquids
- Version with grids: storage of water pollutant and flammable liquids



Order no. 27878

Type	W x D x H (mm)	 1)	Sump pallet	
			Painted Order No.	Galvanised Order No.
RWG 1064 with 4 x grid	1236 x 816 x 2100	205	27865	27866
RWG 1064 with 4 x shelf	2470 x 816 x 2100	225	27867	27868
RWG 2064 with 8 x grid	1236 x 816 x 2100	205	27869	27870
RWG 2064 with 8 x shelf	2470 x 816 x 2100	225	27871	27872

1) Collection volume (l)

Additional storage level for type

Version 1064 / 1072 / 2064	27878	27878
Version 1064 / 2064	27885	27885



Hazardous material racks | with grid



Order No. 27859

Hazardous substances rack with grid and PE sump

Storage of water pollutant and aggressive liquids

Construction

- Galvanised rack frames
- Sturdy construction due to reinforcement cross bars
- Storage levels in 25 mm increments, height-adjustable
- Load capacity per storage shelf: 200 kg (evenly distributed)
- Rack system can be extended individually
- Flat-pack delivery with assembly instructions

Ausstattung

- 3 galvanised grids or PE grids as storage levels and 1 sump made of PE
- Polyethylene sumps with high resistance against aggressive chemicals (such as acids and alkalis)



Order No. 27853



Type	Capacity (l)	Basic rack W x D x H (mm)	Order No.	Add-on rack W x D x H (mm)	Order No.
RSG-V 1064 with galvanised grid	30	1060 x 637 x 2000	27853	1012 x 637 x 2000	27854
RSG-V 1364 with galvanised grid	40	1360 x 637 x 2000	27855	1312 x 637 x 2000	27856
RSG-K 1064 with PE grid	30	1060 x 637 x 2000	27857	1012 x 637 x 2000	27858
RSG-K 1364 with PE grid	40	1360 x 637 x 2000	27859	1312 x 637 x 2000	27860

Additional storage level for type	Order No.	Order No.
Version 1064 / 1072 / 2064	27878	27878
Version 1364 / 1372	27880	27880
Version 1064	27881	27881
Version 1364	27882	27882

Hazardous material racks | with sump pallet



Order No. 27861



Order No. 27863

Hazardous substances rack with PE sump

Storage of water pollutant and aggressive liquids

Construction

- Galvanised rack frames
- Sturdy construction due to reinforcement cross bars
- Storage levels in 25 mm increments, height-adjustable
- Load capacity per storage shelf: 200 kg (evenly distributed)
- Rack system can be extended individually
- Flat-pack delivery with assembly instructions

Interior equipment

- 4 polyethylene collecting sumps as storage levels
- Polyethylene sumps with high resistance against aggressive chemicals (such as acids and alkalis)



Order no. 27883

Type	Capacity (l)	Basic rack W x D x H (mm)	Order No.	Add-on rack W x D x H (mm)	Order No.
RSW 1064 with PE sump pallet	30	1060 x 637 x 2000	27861	1012 x 637 x 2000	27862
RSW 1364 with PE sump pallet	40	1360 x 637 x 2000	27863	1312 x 637 x 2000	27864

Additional storage level for type	Order No.	Order No.
Version 1064	27883	27883
Version 1364	27884	27884





Hazardous material depots made of steel

With wing doors



page 48



page 48



page 49



page 49



page 50



page 50

Hazardous material depots made of polyethylene

With wing doors



page 52



page 52



page 53



page 53



page 51



page 53

With pull-down blind



page 52



page 52



page 53



page 53

With sliding doors



page 51





Order No. 32004

Hazmat depot made of steel

Approved and safe

- Approved for the safe storage of flammable liquids (passive storage) and water pollutants
- With natural ventilation (0.4 times air change)

Safe, easy and efficient operation

- Light, easy opening and closing of the lid with gas pressure springs
- Protection against unauthorized use through a central locking mechanism for doors and lids
- Lid and doors can be opened independently
- Optimal access through 120° opening angle of the doors
- Drum storage directly on the galvanised grid or on Euro/chemical pallets

Flexible



- Also suitable for storing 60 liter drums and small containers with the optionally available shelf combinations
- A ground clearance of 100 mm for optimal accessibility



Order No. 32006



Order No. 32008

Type	W x D x H (mm)	 ¹⁾	 ²⁾	Order No.
Depot sheet steel powder-coated 2 x 200 litre drum	1425 x 960 x 1540	205	815	32004
Depot sheet steel powder-coated 4 x 200 litre drum	1425 x 1350 x 1480	205	1215	32006
Depot sheet steel powder-coated 4 x 200 litre drum	1425 x 1350 x 1610	400	1215	32008

Accessories	W x D x H (mm)	Order No.
Rack supports (1 pair) for mounting rack system traverses	75 x 63 x 1161	32010
Rack supports (1 pair) for mounting grids/rest bars	40 x 600 x 60	10040
Grid (whole width) for mounting on rack system traverses	1280 x 600 x 30	10037
Grid (half width) for mounting on rack system traverses	600 x 600 x 30	10038
Drum platform (60 litres) for mounting on rack system traverses	397 x 500 x 55	23053



Order No. 32012

Hazmat depot made of steel

Approved and safe

- Approved for the safe storage of flammable liquids (passive storage) and water pollutants
- With natural ventilation (0.4 times air change)

Safe, easy and efficient operation

- Light, easy opening and closing of the lid with gas pressure springs
- Protection against unauthorized use through a central locking mechanism for doors and lids
- Lid and doors can be opened independently
- Optimal access through 120° opening angle of the doors
- Drum storage directly on the galvanised grid or on Euro/chemical pallets

Flexible



- A ground clearance of 100 mm for optimal accessibility



Order No. 32014



Order No. 40020

Type	W x D x H (mm)	 1)	 2)	Order No.
Depot sheet steel powder-coated 2 x 200 litre drum	1425 x 960 x 1870	205	815	32012
Depot sheet steel powder-coated 4 x 200 litre drum	1425 x 1350 x 1810	205	1215	32014
Depot sheet steel powder-coated 4 x 200 litre drum	1425 x 1350 x 1930	440	1215	40020

1) capacity (litre), 2) load capacity (kg)





Order No. 38711

Hazmat depot made of steel

Approved and safe

- Approved for the safe storage of flammable liquids (passive storage) and water pollutants
- With natural ventilation (0.4 times air change)

Safe, easy and efficient operation

- Interior height optimized for drums with mounted filling pumps or filling funnels
- Ventilation openings for passive storage of flammable liquids
- Delivery of fully assembled depot

Flexible



- A ground clearance of 100 mm for optimal accessibility



Order No. 38712



Order No. 38713

Type	W x D x H (mm)	 ¹⁾	 ²⁾	Order No.
Depot sheet steel powder-coated 1 x 200 litre drum	850 x 700 x 2000	220	400	38711
Depot sheet steel powder-coated 2 x 200 litre drum	1700 x 700 x 1800	220	800	38712
Shelf	805 x 660 x 30			38713

1) capacity (litre), 2) load capacity (kg)



Order No. 31858

Hazmat depots made of PE

Approved and safe

- Approved for the safe storage of water pollutants
- High resistance to oils, acids and alkalis



Safe, easy and efficient operation

- Smooth-running, lockable sliding gates or wing doors
- Convenient interior height for safe and efficient loading with a forklift or forklift truck
- Integrated pocket for access underneath by forklifts and forklift trucks
- Ready for anchoring to the ground (anchor kit optional)
- Delivery of fully assembled depot



Order No. 36471



Type	W x D x H (mm)	 1)	 2)	Order No.
Depot PE 4 x 200-L-drum or 1 x 1000-L-IBC, accessible by forklift	1560 x 1550 x 2330	1000	800	31858
Depot PE 8 x 200-L-drum or 2 x 1000-L-IBC, accessible by forklift	3200 x 1750 x 2170	1000	3600	36471
Mounting kit for floor anchoring				31859

1) capacity (litre), 2) load capacity (kg)



Hazardous material depots | Polyethylene



Order No. 40057

Hazmat depots made of PE

Approved and safe

- Approved for the safe storage of water pollutants
- High resistance to oils, acids and alkalis

Safe, easy and efficient operation

- Wing door or space-saving roller blind
- With integrated sump pallet
- For direct placement of a barrel on a Euro pallet or barrel storage on the optional PE half pallet
- Integrated pocket for access underneath by forklifts and forklift trucks
- Ready for anchoring to the ground (anchor kit optional)

Depot with rack system

- Safe storage of small and medium-sized containers
- Rack with galvanised or PE rack frames and 3 shelves
- Dimensions shelves B x D (mm): 900 x 800 (steel) or 900x 590 (PE)
- Load capacity per storage level: 250 kg (steel) or 180 kg (PE)



Order No. 40058



Order No. 40060



Order No. 40062

Type	W x D x H (mm)	1)	2)	Version		
				Drum	Steel rack	Plastic rack
Depot PE, wing door	1140 x 1050 x 2060	245	400	40057	40058	40059
Depot PE, pull-down blind	1140 x 1050 x 2060	245	400	40060	40061	40062
PE half pallet for placing 1 drum à 200 L	600 x 800 x 160			40063	-	-
Mounting kit for floor anchoring				31859	31859	31859

1) capacity (litre), 2) load capacity (kg)



Order No. 31856

Hazmat depots made of PE

Approved and safe

- Approved for the safe storage of water pollutants
- High resistance to oils, acids and alkalis

Safe, easy and efficient operation

- Wing door or space-saving roller blind
- With integrated sump pallet
- For direct placement of a barrel on a Euro pallet or barrel storage on the optional PE half pallet
- Integrated pocket for access underneath by forklifts and forklift trucks
- Ready for anchoring to the ground (anchor kit optional)

Depot with rack system

- Safe storage of small and medium-sized containers
- Rack with galvanised rack frames and 3 shelves (in 25 mm increments height-adjustable)
- Dimensions shelves B x D (mm): 1300 x 800 (steel) or 1300 x 590 (PE)
- Load capacity per storage level: 250 kg (steel) or 180 kg (PE)



Order No. 36470



Order No. 40065



Order No. 40067

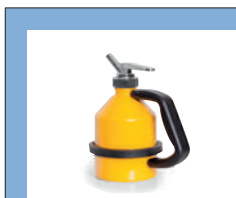
Type	W x D x H (mm)	1)	2)	Version		
				Drum	Steel rack	Plastic rack
				Order No.	Order No.	Order No.
Depot PE, wing door	1560 x 1080 x 1980	250	800	31856	32003	40064
Depot PE, wing door	1140 x 1410 x 1980	240	800	36470	-	-
Depot PE, pull-down blind	1554 x 1083 x 1980	250	400	40065	40066	40067
PE grid to adjust for drums	1400 x 910 x 32			31857	-	-
Mounting kit for floor anchoring				31859	31859	31859

1) capacity (litre), 2) load capacity (kg)



Overview: Safety containers

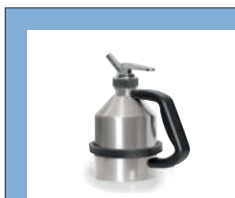
Dispensing cans



Sheet steel
page 56



PE
page 56

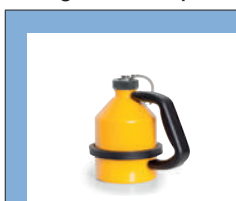


Stainless steel
page 56



Stainless steel
page 63

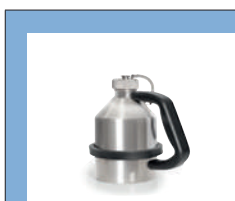
Storage and transport cans



Sheet steel
page 56



PE
page 56



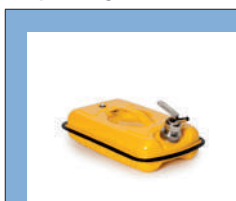
Stainless steel
page 56

Filling cans



PE
page 59

Dispensing canister



Sheet steel
page 57



Stainless steel
page 57



Sheet steel
page 58



Stainless steel
page 58

Storage and transport canister



Sheet steel
page 57



Stainless steel
page 57



Sheet steel
page 58



Stainless steel
page 58

Cleaning containers



Sheet steel
page 61



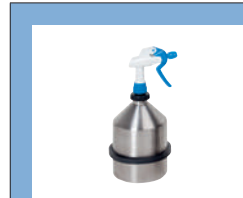
Stainless steel
page 61



PE
page 61



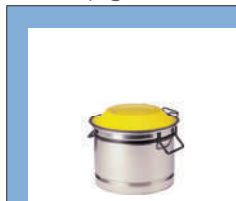
Sheet steel
page 61



Stainless steel
page 61



Stainless steel
page 60



Stainless steel
page 60



Stainless steel
page 60

Safety collection and disposal containers



Sheet steel
page 62



Stainless steel
page 62



Stainless steel
page 62

Stand ashtray



PE
page 62



PE
page 62





Order No. 23126

Order No. 23127

Order No. 23128

Safety containers made of steel, stainless steel or PE

- Made of galvanised steel with additional signal yellow coating, stainless steel or PE
- Plastic protective ring eliminates the risk of damaging the robust can body (steel and stainless steel versions only)
- Integrated removable flame guard (steel and stainless steel versions only)
- Incl. classification labels with danger symbols and warning notes

Storage and transport cans

- Tight-fitting screw cap
- Lock secured against loss (steel and stainless steel versions only)

Dispensing cans

- Easy-motion fine dosing tap made of stainless steel (1.4301) incl. ventilation and PTFE seal
- Fine dosing tap can be redated through 360°



Order No. 23129

Order No. 23130

Order No. 23131



Order No. 40084



Order No. 40083



Order No. 40095



Order No. 40094

Type	1 L Ø x H (mm)	2 L Ø x H (mm)	5 L Ø x H (mm)	Capacity		
				1 L Order No.	2 L Order No.	5 L Order No.
Storage can sheet steel	132 x 181	158 x 226	178 x 336	23129	23130	23131
Storage can stainless steel	132 x 181	158 x 226	178 x 336	40081	40082	40083
Storage can PE	100 x 150 x 200	100 x 150 x 280		40093	40094	-
Pouring can sheet steel	132 x 215	158 x 260	178 x 370	23126	23127	23128
Pouring can stainless steel	132 x 215	158 x 260	178 x 370	40084	40085	40086
Pouring can PE	100 x 150 x 230	100 x 150 x 310		40095	40096	-
Funnel galvanised steel				23132	23132	23132
Funnel stainless steel				36486	36486	36486



Order No. 36475

Order No. 36476

Order No. 36477

Safety containers made of steel or stainless steel

- Made of galvanised steel with additional signal yellow coating or stainless steel
- Integrated removable flame guard
- Plastic protective ring eliminates the risk of damaging the robust can body
- Seals made of NBR
- Incl. classification labels with danger symbols and warning notes
- Ventilation valve for uniform, precision filling

Storage and transport cans

- UN certification for the transport of liquids of the packaging groups I, II and III (UN 3A1/X/250/...)
- Opening Ø approx. 35 mm with screw cap made of aluminium

Dispensing cans

- Easy-motion fine dosing tap made of stainless steel (1.4301) incl. ventilation and PTFE seal
- Fine dosing tap can be redated through 360°



Order No. 36472

Order No. 36473



Order No. 40087



Order No. 40088



Order No. 40090



Order No. 40091

Type	Capacity			Capacity		
	5 L	10 L	20 L	5 L	10 L	20 L
	W x D x H (mm)	W x D x H (mm)	W x D x H (mm)	Order No.	Order No.	Order No.
Storage/transportation canister sheet steel	244 x 408 x 114	244 x 408 x 186	308 x 508 x 216	36472	36473	36474
Storage/transportation canister stainless steel	244 x 408 x 114	244 x 408 x 186	308 x 508 x 216	40087	40088	40089
Dispensing canister sheet steel	244 x 428 x 169	244 x 428 x 241	308 x 528 x 271	36475	36476	36477
Dispensing canister stainless steel	244 x 428 x 169	244 x 428 x 241	308 x 528 x 271	40090	40091	40092



Safety containers | Steel, stainless steel



Order No. 36478



Order No. 36479

Safety containers made of steel or stainless steel

- Made of galvanised steel with additional signal yellow coating or stainless steel
- Seals made of NBR
- Incl. classification labels with danger symbols and warning notes
- Ventilation valve for uniform, precision filling

Storage and transport cans

- UN certification for the transport of liquids of the packaging groups I, II and III (UN 3A1/X/250/...)
- Opening Ø approx. 43,5 mm with screw cap made of aluminium
- Standard with flexible outlet pipe made of plastic (Ø approx. 20 mm)
- Storage of the dirt-proof outlet pipe inside the container



Order No. 36480



Order No. 36481

Safety containers with dispensing tap

- The dispensing tap with easy to use operating lever allows dispensing into smaller containers



Order No. 36482



Order No. 36484



Order No. 36485

Type	Capacity	
	10 L	20 L
	W x D x H (mm)	W x D x H (mm)
Storage/transportation canister sheet steel	170 x 340 x 280	170 x 340 x 470
Storage/transportation canister stainless steel	170 x 340 x 280	170 x 340 x 470
Dispensing canister sheet steel with dispensing tap	170 x 445 x 280	170 x 445 x 470
Dispensing canister stainless steel with dispensing tap	170 x 445 x 280	170 x 445 x 470
Funnel stainless steel		
	Order No.	Order No.
	36478	36479
	36480	36481
	36482	36483
	36484	36485
	36486	36486



Order No. 36489

Filling cans

- safe, clean and comfortable dispensing of liquids in the workplace
- Resistant, chemically stable and UV-stable containers
- Incl. 2 screw-on type outlets in different sizes
- 18 labels in 9 signal colours and a multilingual safety label for content labelling according to GHS
- With stable handles for ergonomic handling
- Available with 2, 5 or 10 litres capacity



Order No. 36487



Order No. 36488



Order No. 36489



Type	W x D x H (mm)	Capacity/Volume (l)	Order No.
Dispensing can PE	140 x 413 x 316	2.00	36487
Dispensing can PE	173 x 413 x 416	5.00	36488
Dispensing can PE	260 x 413 x 523	10.00	36489



Cleaning containers | Steel, stainless steel



Order No. 2898

Small parts cleaning basket made of stainless steel

- When closing the lid the immersion sieve is pressed down, pushing the parts to be cleaned into the cleaning fluids
- Clamps keep the lid closed

Cleaning and immersion container made of stainless steel

- High resistance even to aggressive cleaning fluids
- Small parts basket available optionally

Dip tank

- Stainless steel lid and basin
- Sheet steel base frame as liquid-tight drip sump
- Dispensing tap made from brass at the basin bottom
- The lid is opened by pressing the foot pedal



Order No. 8571



Order No. 8570



Order No. 8633

Order No. 8632

Type	Capacity			Capacity		
	2.5 L	10 L	20 L	2.5 L	10 L	20 L
	Ø x H (mm)	Ø x H (mm)	Ø x H (mm)	Order No.	Order No.	Order No.
Cleaning and immersion container stainless steel		270 x 370	270 x 430	-	8570	8633
Parts basket				-	8571	8635
Small parts cleaner	265 x 160			8632	-	-

Type	W x D x H (mm)	Order No.
Immersion container with stainless steel basin	670 x 660 x 935	2898
Parts basket for immersion container	400 x 280 x 120	2900
Sieve bottom for immersion container	600 x 311 x 17	2901

Cleaning containers | Steel, stainless steel, PE



Cleaning containers made of sheet steel, stainless steel or PE

Plunger can

- For safely moistening cleaning rags and sponges
- Easy-to-use pump tube with spring-loaded stainless steel dasher plate
- Economical removal, residual liquid flows back into the container
- Protection by reducing the vapors produced
- Protection against flame propagation through integrated flame arrester

Spray cans

- Economical and controlled spraying of surfaces and parts to be cleaned
- Ergonomic spray cap and integrated pump mechanism manufactured from plastic
- Incl. screw-on extension
- Cans with protector ring

Material

- Galvanized steel, additionally coated in warning yellow with protective plastic ring
- High quality stainless steel (1.4404) with plastic protective ring
- Robust high-resistance polyethylene



Order No. 40097



Order No. 40098



Order No. 23139



Order No. 23137

Type	1 L Ø x H (mm)	2 L Ø x H (mm)	Capacity	
			1 L Order No.	2 L Order No.
Plunger can sheet steel	178 x 200	178 x 290	23133	23134
Plunger can stainless steel	178 x 200	178 x 290	23135	23136
Plunger can PE	120 x 115 x 265	145 x 155 x 265	40097	40098
Spray can sheet steel	165 x 300	190 x 345	23137	23138
Spray can stainless steel	165 x 300	190 x 345	8628	23139



Disposal containers | Steel, stainless steel, PE



Order No. 23156



Order No. 23158



Order No. 23159



Order No. 23161



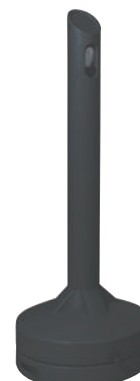
Order No. 8640



Order No. 8641



Order No. 40235



Order No. 40237

Disposal bins made of sheet steel, stainless steel or PE

Disposal bins

- Safe collection of solvent-soaked cleaning rags and other waste
- Reduce vapor leakage to a minimum
- Safe opening thanks to large pedal with non-slip surface
- Protection against fires caused by self-closing lid
- Bottom edge with ventilation openings, self-ignition of the contents is prevented
- Container welded liquid-tight, protection against leaking liquids
- FM Certified
- Container either galvanized sheet steel with red powder coating or made of stainless steel

Disposal container

- Made of stainless steel
- Reduce escaping vapours to a minimum
- Lid opened with foot pedal, serial selfclosing lid

Safety floor-standing ashtray

- Made of robust, weatherproof polyethylene
- Cigarettes that have been thrown in expire briefly because the narrow slot minimizes the supply of oxygen
- Low center of gravity guarantees high stability
- Incl. Squeezing plate, easily removable aluminum inner container for collecting ashes and cigarette butts
- Integrated eyelet for wind and anti-theft protection
- Possibilities for floor attachment and weighting, e.g. B. with sand

Type	W x D x H (mm)	Capacity/Volume (l)	Material		
			Sheet steel	Stainless steel	PE
Disposal bin sheet steel	385 x 382 x 429	20	39379	40009	-
Disposal bin sheet steel	441 x 440 x 490	35	23156	23159	-
Disposal bin sheet steel	493 x 495 x 536	50	23157	23160	-
Disposal bin sheet steel	535 x 535 x 577	65	23158	23161	-
Disposal container stainless steel	Ø 270 x 500	20	-	8640	-
Disposal container stainless steel	Ø 390 x 600	50	-	8641	-
Ashtray grey	430 x 430 x 1140	15	-	-	40235
Ashtray black	430 x 430 x 1140	15	-	-	40237



Order No. 14745

Order No. 14746

Order No. 14747

Safety container made from stainless steel

- Made of stainless steel 1.4401
- PTFE seals
- Removable flame arrester made of perforated stainless steel
- Ergonomic form, safe working
- Fine dosing tap can be rotated through 360°
- With ventilation and pressure relief valve



Order No. 14757

Order No. 14758

Order No. 14759

Type	Capacity			Capacity		
	1 L	2 L	5 L	1 L	2 L	5 L
	Ø x H (mm)	Ø x H (mm)	Ø x H (mm)	Order No.	Order No.	Order No.
Dispensing can stainless steel	115 x 210	145 x 280	145 x 445	14745	14746	14747

Type	Capacity			Capacity		
	5 L	10 L	20 L	5 L	10 L	20 L
	W x D x H (mm)	W x D x H (mm)	W x D x H (mm)	Order No.	Order No.	Order No.
Dispensing canister stainless steel	234 x 402 x 126	240 x 430 x 240	175 x 380 x 495	14757	14758	14759



Safety container | Stainless steel



Transport cans

Transport canister

Safety containers made from stainless steel

- Explosion-proof with pressure relief valves and flame arrester
- High chemical resistance, made of high-grade stainless steel 1.4571
- PTFE seals for high resistance
- Removable flame retarder made of perforated stainless steel

Dispensing cans

- Fine dosing tap can be redated through 360°
- With ventilation and pressure relief valve

Transport cans

- With screw cap (secured against loss with a flexible shaft)
- With UN transport approval (GGVSEB / ADR / RID / IMDG-Code / ICAO-TI)
- Approved for all hazardous substances (packing group X): UN 1A1/X2.0/400...



Dispensing canister



Transport canister



Order no. 16790

Type	1 L	2 L	5 L	Capacity		
	Ø x H (mm)	Ø x H (mm)	Ø x H (mm)	Order No.	Order No.	Order No.
Dispensing can stainless steel	111 x 235	131 x 295	165 x 405	16768	16769	16770
Transport can stainless steel	110 x 235	130 x 295	165 x 400	16771	16772	16773
Fine measuring tap				16787	16787	16787
Funnel				16790	16790	16790

Type	5 L	10 L	20 L	Capacity		
	W x D x H (mm)	W x D x H (mm)	W x D x H (mm)	Order No.	Order No.	Order No.
Dispensing canister stainless steel	130 x 200 x 310	130 x 280 x 380		16774	16775	-
Transport canister stainless steel	130 x 200 x 310	130 x 280 x 380	175 x 345 x 470	16776	16777	27974
Fine measuring tap				16788	16788	16788
Funnel				16791	16791	16791



Dispensing canister

Dispensing canisters

- With ventilation and manual pressure relief valve
- Selfclosing tap
- Applicable horizontally



Standing vessels

Safety container made from stainless steel – for inhouse use

- High stability
- Self-closing tap
- Pressure relief valve in the screw lid
- Level indicator made from PTFE, optical control of the substances during filling and extracting
- 25 litre container stackable



Order no. 16796

Type	5 L	10 L	20 L	25 L	Capacity			
	W x D x H (mm)	W x D x H (mm)	W x D x H (mm)	W x D x H (mm)	Order No.	Order No.	Order No.	Order No.
Dispensing can with fine dosing tap and ventilation	130 x 200 x 310	130 x 280 x 380	175 x 345 x 470		16779	16780	16780	-
Stand vessel with fine dosing tap and ventilation		260 x 260 x 350			-	16782	-	-
Stand vessel tap		260 x 260 x 350		315 x 315 x 530	-	16783	-	16785
Stand vessel tap and level Indicator		260 x 260 x 350		315 x 315 x 530	-	16784	-	16786
Self-closing tap for dosing canisters					16796	16796	16796	-
Funnel made from stainless steel (for 10 and 25 litres)					-	16789	-	16789



Overview: Hazardous materials handling

Gas cylinder storage and handling



Gas cylinder depots
page 69



Gas cylinder trolley
page 68



Gas cylinder retainer
page 68

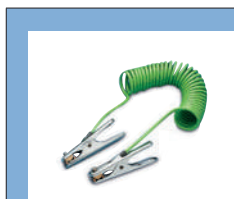
Drum protection accessories



Drum funnel
page 70



IBC-Funnel
page 71



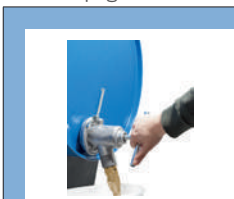
Grounding cable
page 72



Drum wrench
page 72



Drum tap
page 73



Drum tool
page 73



Level indicator
page 73

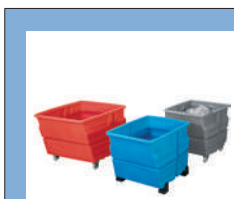


Drum valve
page 73

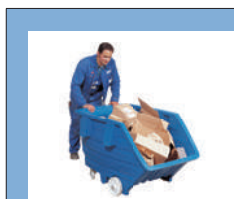
Collection systems



Stackable containers
page 76



Multipurpose container
page 77



Dump trolley
page 78



Tipping skip
page 79

Drum transport



Drum dolly
page 80



Drum lifter
page 82



Drum tongs
page 81



Drum lifter
page 84



Drum turner
page 83

Pumps

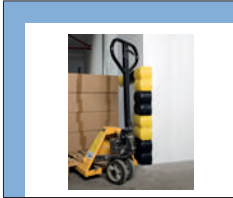


Container pumps
page 74



Drum pumps
page 75

Collision protection systems



Wall protection profile
page 86



Pillar protection profiles
page 86

Grit bin

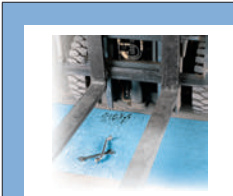


Without dispensing hatch
page 87



With dispensing hatch
page 87

Leakage management



Sorbents oil
page 88



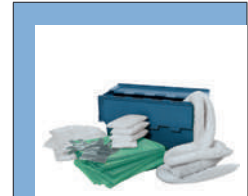
Sorbents UNIVERSAL
page 89



Sorbents SPECIAL
page 90



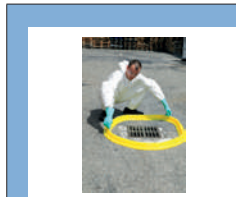
Sorbents transport trolley
page 91



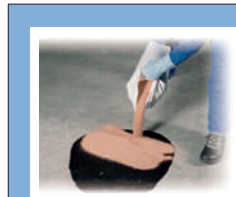
Sorbents transport boxes
page 91



Sealing mats
page 93



Barrier boundaries
page 93



Granules
page 92



Gas cylinder handling



Order No. 13265

Gas cylinder wall brackets

- Steel, galvanised incl. chains to secure the cylinders
- For gas cylinders Ø 140, 230 and 320 mm
- Made of polyethylene incl. belt
- For gas cylinders Ø between 140 and 320 mm

Gas cylinder trolley

- For the safe transportation of 1 gas cylinder (up to Ø 320 mm)
- Includes a belt to secure the cylinder in place
- Solid rubber wheels, wheel – Ø 200 mm
- Load capacity: 80 kg

Polyethylene gas cylinder pallet

- For up to 4 gas cylinders (diameter 230 mm)
- Safe transport with fork lift truck
- Incl. safety chain for additional attachment to fork lift truck
- Load capacity 300 kg



Order No. 13266



Order No. 13267

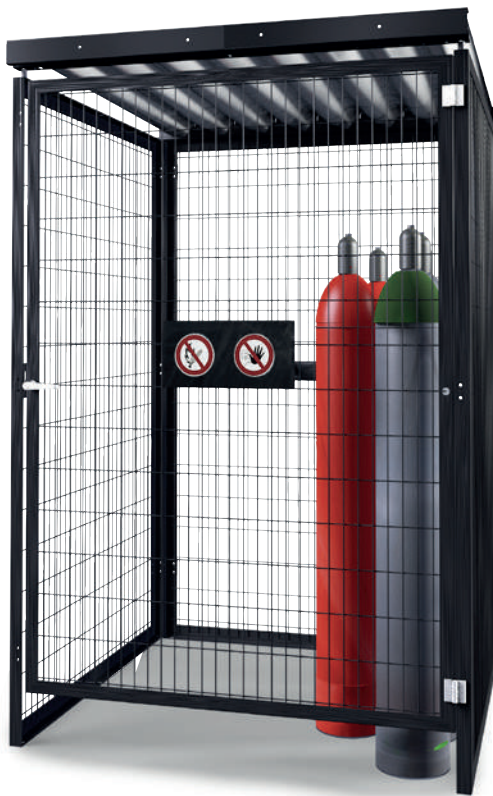


Order No. 13253



Order No. 12793

Type	W x D x H (mm)	Diameter bottles	Number of bottles			
			1x	2x	3x	4x
Gas cylinder holder galvanised steel	192 x 131 x 60	140	13255	13254	13253	-
Gas cylinder holder galvanised steel	280 x 175 x 60	230	18162	12793	14699	-
Gas cylinder holder galvanised steel	372 x 221 x 60	320	13252	13251	-	-
Gas cylinder trolley polyethylene	495 x 627 x 1110	230	13266	-	-	-
Gas cylinder trolley with support wheel polyethylene	495 x 800 x 1110	to 320	13265	-	-	-
Transport frame polyethylene	1120 x 600 x 1100	230	-	-	-	13267



Gas depots

Approved and safe

- Safe and approved storage of gas cylinders in outside areas

Construction

- Sturdy steel frame construction with mesh grid
- Roof made of profiled sheet steel
- Galvanized with additional powder coating in gray (RAL 7016) for optimal corrosion protection
- Lockable wing door
- Disassembled delivery, with assembly instructions

Storage Capacity Model 38715:

- 25 gas bottles of 50 liters each

Storage Capacity Model 38716:

- 50 gas bottles of 50 liters each

Stacking shelf

- Sturdy galvanized construction
- Up to 2 shelves can be stacked on top of each other
- Load capacity 500 kg

Order No. 38715



Order No. 38716

Type	W x D x H (mm)	Order No.
Gas cylinder depot, single door	1430 x 1410 x 2210	38715
Gas cylinder depot, two doors	2760 x 1410 x 2210	38716
Stacking rack	1437 x 1038 x 750	8615



Drum funnel | Polyethylene, sheet steel



Order No. 2729

Drum funnel made of polyethylene or sheet steel

- Cans and filters can be put on the fluted area for draining
- Optional available lid protects against contamination and can be locked
- Suitable for 200 litre drums

With high sidewalls

- Covers the whole drum surface
- Grooved surface allows a clean and splash-free infilling
- Optional available lid protects against contamination and can be locked
- Suitable for 200-litre-drums (steel and plastic drum, bung hole drum or drum with lid)

Made of steel

- Extensive, safe filling in the 2" bung hole of 200 litre steel drums
- The funnel has a 30 litre capacity, suitable to fill in large amounts of liquid into the drum quickly



Order No. 11308



Order No. 2732



Order No. 12125

Type	Ø x H (mm)	Capacity/Volume (l)	Without sieve	With sieve
			Order No.	Order No.
Drum funnel PE	Ø 580 x 115	5	2729	2730
Drum funnel PE with lid	Ø 605 x 145	5	2731	2732
Drum funnel PE conductive with lid	Ø 605 x 145	5	40076	40077
Drum funnel PE	Ø 690 x 200	22	11308	11309
Drum funnel PE with lid	Ø 690 x 230	22	11310	11311
Drum funnel PE conductive with lid	Ø 690 x 190	22	23117	23119
Drum funnel sheet steel	Ø 650 x 135	30	12125	-



IBC funnel made of polyethylene

- Funnel for use with a conventional IBC
- For safely collecting and channelling liquids
- Domed base - liquids run off
- Spout Ø approx. 100 mm (round version)

Version angular

- Large drain opening (Ø 145 mm) with integral 2" connection
- Discharge basin with side storage areas
- Storage pocket for IBC locking lid

Safety dispensing lid

- Effectively prevents contamination
- Safely restrains dripping residue
- For 200 litre steel bung hole drums
- Openings for 3/4" and 2" bung hole - for using pumps and/or fill-level indicators

Safety dispensing platform

- Protection from dripping residues
- For 200 litre steel bung hole drums
- With openings for 3/4" and 2" bung holes

Order No. 40078



Order No. 13303



Order No. 13305



Order No. 40079

Type	W x D x H (mm)	Max. filling volume (l)	Order No.
IBC funnel PE round	690 x 820 x 200	30.00	40078
IBC funnel PE angular	790 x 730 x 175	15.00	40079
IBC funnel PE conductive angular	790 x 730 x 175	15.00	40080
Dispensing lid	Ø 600 x 40		13303
Dispensing platform PE	600 x 900 x 400		13305
Dispensing platform PE conductive	600 x 900 x 400		23140



Earthing wire and drum wrench



Order No. 19307



Order No. 19349



Order No. 40072



Order No. 40075



Order No. 19303



Order No. 19306



Order No. 2781



Order No. 2780



Order No. 10055



Order No. 19302

Earthing cable

Prevents danger of explosion through sparking or static charge

- Approved in accordance with ATEX II 1GD T6
- Low electrical resistance with high mechanical strength
- Chemically resistant and wear-resistant cable sheath
- ATEX version with stainless steel clamps
- Spiral grounding cable with length 3 or 5 m

Tested ATEX stainless steel pliers in 2 optional sizes

- Type MD (medium duty, opening angle approx. 15 mm) - for drums, containers up to 200 liters
- Type HD (heavy duty, large opening angle approx. 40 mm) - for larger system components, drum and containers from 200 liters etc.

Drum wrench

Cast iron

- Suitable for all bung types

Bronze

- Suitable for all common drum types
- Compact design, sparking is completely eliminated

Steel

- Fits all standard bung covers
- Easy opening with long handle

Plastic

- Suitable for 3/4" and 2" bung hole and synthetic lids DIN 51 and DIN 61

Cross-shaped drum wrench

- In painted steel
- To easily opening all conventional drum lids using the wheel spider principle

Spiral grounding cable	Version MD		Version HD			
	Order No.	Order No.	Order No.	Order No.	Order No.	Order No.
ATEX	Yes	Yes	Yes	Yes	No	No
Length (mm)	3000.00	3000.00	3000.00	3000.00	3000.00	3000.00
with 1x stainless steel tongs, 1x eyelet	19307	19308	40072	40073	19303	19304
with 2x stainless steel tongs	19348	19349	40074	40075	19305	19306

Drum key	Order No.	Order No.	Order No.	Order No.	Order No.	Order No.
Cast iron	2781	Bronze	12033	Steel	Plastic	Cross steel
		2780		10055	9701	19302



- Suited for filling aggressive chemicals
- Made of polypropylene - high resistance to many acids and alkalis

Order No. 2774



- Suitable for filling e.g. mineral oil products, alcohols, flammable solvents etc.
- Made of stainless steel / aluminium

Order No. 40070



- Suitable for filling even highly viscous liquids, e.g. mineral oil products, as well as alcohols, flammable solvents
- Made of stainless steel / aluminium

Order No. 40071

Drum tools

- Simultaneous opening and emptying of drums, suitable for drums with 2" thread
- Electric or pneumatic connection not necessary
- Complete emptying of a drum in horizontal position



Level indicator

- With protecting cap, integrated ventilation indicates when drum is nearly full

Order No. 18094



Level indicator

- Made from chromed steel
- Fits 3/4" drum taps
- Enables filling to be carried out in installed state

Order No. 2776



Level indicator with volume scale

- Suitable for all common 200 litre drums
- For non corrosive liquids

Order No. 13299



Drum safety vent made of brass with 2" thread

- Provides the necessary pressure balance when dispensing or pumping down
- Valve opens at 0.35 bars

Order No. 2777

Stainless steel tap with 3/4" thread

- Self closing with flame arrester and PTFE seal
- Adjustable in position
- For aggressive liquids
- With suspension device for filling vessels



Order No. 2797

Brass tap with 3/4" thread

- Self closing with flame arrester and PTFE seal
- For non-corrosive liquids < 30 SAE
- With suspension device for filling vessels



Order No. 2799

Fine dosing tap made of stainless steel with 3/4" thread

- Self closing with flame arrester and PTFE seal
- Adjustable in position
- For aggressive liquids



Order No. 2795

Brass tap with 3/4" thread

- Self closing with flame arrester and PTFE seal
- For aggressive liquids



Order No. 2798

Brass tap with 2" thread

- Self closing with flame arrester and PTFE seal
- For viscous liquids > 30 SAE



Order No. 2800

Fine dosing tap made of injection moulding zinc with 3/4" thread

- Self closing incl. flame arrester and plastic seal for alkaline liquids and mineral oil products



Order No. 2796



Drum pumps

Pumps

- For für weak acids, alkalis and petrochemical liquids
- Emptying of canisters up to 60 litres
- Thread connection: Ø 64 mm (BSI)
- Parts in contact with liquids are made of PP, PE and FKM

Solvent pump

- Parts in contact with liquids are made of stainless steel (1.4301) and PTFE
- Screw connection for 2" fine thread, for containers up to 60 litres
- Connection adapters for all common containers as accessories

With foot pedal

- submersion pipe steplessly adjustable to drum depth
- For drums up to 200 litres

For hand operation

- Fixed drip nozzle with stop valve of stainless steel/PTFE

Universal pumps

- Submersion pipe steplessly adjustable to drum depth
- Universal plugs for container openings Ø 30 - 70 mm
- Conveyor pipe made from PP
- Pump for hand operation with hose (PVC), length 1,5 m and stop valve
- Foot pedal for containers up to 120 litres
- Mini pump for containers up to 10 litres, container opening Ø 20–36 mm



Drum pump
made of stainless steel, pedal-operated,
conveying: 20.00 l/min, thread 2"
Order No. 16841



Container pump
made of PP, hand operation, for weak acids
and bases, conveying: 8.00 l/min
Order No. 16840



Drum pump
made of stainless steel, hand operation, for
ultrapure liquids, solvents and flavourings,
conveying: 10.00 l/min
Order No. 16842



Drum pump with hand operation



Mini pump with hand operation



Drum pump with foot operation

Model	Version	Pipe Ø (mm)	Immersion tube length (mm)	Conveying capacity (l/min)	Order No.
Container pump made of PP	hand operation		1000.00	8.00	16840
Drum pump made of stainless steel	pedal-operated		950.00	20.00	16841
Drum pump made of stainless steel	hand operation		600.00	10.00	16842
Container pump made of PP	hand operation	12.00	700.00	14.00	16849
Container pump made of PP	hand operation	18.00	700.00	26.00	16870
Container pump made of PP	hand operation	12.00	700.00	12.00	16872
Mini pump made of PP	hand operation	10.00	450.00	4.00	16873
Container pump made of PP	pedal-operated	15.00	700.00	20.00	16874
Container pump made of PP	pedal-operated	22.00	900.00	30.00	16884
Container pump made of PP	pedal-operated	12.00	700.00	12.00	16895
Accessories					Order No.
Adapter					16896



Drum pump made of stainless steel

- For flammable liquids
- Stainless steel 1.4301, PTFE-seal
- Optionally with outlet hose or bend
- Electrically conductive and suitable for zone 0 and 1
- Explosion group II A
- Submersion pipe Ø 32 mm



Drum pumps

- With outlet bend (PP) or PVC outlet hose incl. stopcock
- Submersion pipe Ø 32 mm
- PTFE seals
- Pumping capacity up to 12 l/min
- For drums and tanks up to 60–1,000 litres



Anti-static set

- Consisting of: 3 colour-coded connecting copper cables with clamping pliers (1 copper cable 1.30 m long, 2 copper cables, insulated 3 m long)

Order No. 2790



Drum pump PTFE

- For the extraction of ultrapure liquids
- With stop valve
- Immersion depth 950 mm
- Submersion pipe: Ø 32 mm
- Pumping capacity: 0,4 l/stroke

Order No. 16927

Model	Version	Immersion depth (mm)	Conveying capacity (l/min)	Order No.
Drum pump made of PP	drain hose	500	0.20	16902
Drum pump made of PP	drip nozzle	500	0.20	16897
Drum pump made of stainless steel	drip nozzle	360	0.22	18908
Drum pump made of stainless steel	drain hose	360	0.22	18909
Drum pump made of PP	drain hose	650	0.23	16915
Drum pump made of PP	drip nozzle	650	0.23	16898
Drum pump made of PP	drain hose	800	0.26	16916
Drum pump made of PP	drip nozzle	800	0.26	16899
Drum pump made of PP	drip nozzle	1000	0.30	18954
Drum pump made of PP	drain hose	1000	0.30	18956
Drum pump made of PP	drain hose	1250	0.30	16918
Drum pump made of PP	drip nozzle	1250	0.30	16900
Drum pump made of PP	drip nozzle	1500	0.30	18955
Drum pump made of PP	drain hose	1500	0.30	18957
Drum pump made of stainless steel	drip nozzle	570	0.35	16923
Drum pump made of stainless steel	drain hose	570	0.35	16925
Drum pump made of stainless steel	drip nozzle	910	0.56	16924
Drum pump made of stainless steel	drain hose	910	0.56	16926

Model	Accessories of	Material	Order No.
Drum screw joint, R 2"	PP drum pump	PP	16934
Drum screw joint, R 2"	stainless steel drum pump	steel	16935
Drum screw joint, thread 2"	all models	PP	18963
Drum screw joint, Tri-Sure	all models	PP	18964
Drum plug Ø 40-70 mm	all models	PVC	16936



Stacking container | Polyethylene



Stacking containers

Stackable containers out of polyethylene Safe and space-saving collection and provision of warehouse goods and recyclable materials

- Manufactured from corrosion-free polyethylene
- Safe-keeping of containers e. g. with acids, alkalis oil, non-flammable cleaning dilution, etc.
- Highly resistant to many acids and alkalis and aggressive substances
- Load capacity 500 kg
- Weather proof and easy to clean
- Low self-weight
- Easily accessible from front or sides



Order No. 22539




Order No. 22548



Order No. 22540



Order No. 22557

Type	W x D x H (mm)	 1)	Colour			
			Grey Order No.	Red Order No.	Blue Order No.	Black Order No.
Stacking containers PE	800 x 500 x 500	90	22536	22537	22539	-
Stacking containers PE	1000 x 800 x 600	260	22540	22541	22543	-
Stacking containers PE	1200 x 800 x 600	300	22548	22549	22551	-
Stacking containers PE	1200 x 1000 x 600	400	22556	22557	22559	-
Lid PE Stacking container PE V 90 L	786 x 523 x 43	-	-	-	-	24279
Lid PE Stacking container PE V 260 L	986 x 823 x 43	-	-	-	-	24280
Lid PE Stacking container PE V 300 L	1186 x 823 x 43	-	-	-	-	24281
Lid PE Stacking container PE V 400 L	1186 x 1023 x 43	-	-	-	-	24282

1) Collection volume (l)

Multipurpose container | Polyethylene

Multipurpose container made of polyethylene



Collection, storage and provision of warehouse goods

- High-quality, dimensionally stable and robust construction
- Easy handling, low dead weight
- Food-safe and easy to clean
- Liquid-tight and extremely resistant to acids and alkalis

Version with feet

- Accessible from below for transporting by forklift trucks and pallet trucks

Version with castors

- Easy, manual transport
- 2 swivel castors and 2 lockable fixed castors, castor diameter 125 mm



Order No. 32030




Order No. 32041



Order No. 32035



Order No. 32045

Type	W x D x H (mm)	 ¹⁾	Colour		
			Grey	Red	Blue
Tipping container PE with feet	825 x 1240 x 845	600.00	Order No. 32030	Order No. 32031	Order No. 32033
Tipping container PE with feet	1030 x 1340 x 845	800.00	Order No. 32038	Order No. 32039	Order No. 32041
Tipping container PE with castors	825 x 1240 x 900	600.00	Order No. 32034	Order No. 32035	Order No. 32037
Tipping container PE with feet	1030 x 1340 x 900	800.00	Order No. 32042	Order No. 32043	Order No. 32045

1) Collection volume (l)



Tipping trolley | Polyethylene



Order No. 13067

Tipping trolley out of polyethylene

Collection and provision of warehouse goods

- Easy to move due to large castors (Ø 200 mm) and swivel castors (Ø 125 mm) of polyamide, lockable
- Easy emptying by tipping the container over the axle of the wheels
- Load capacity:
Capacity 300 L and 500 L = 150 kg
Capacity 750 L and 1000 L = 250 kg



Order No. 23073




Order No. 15483



Order No. 15486 + 22812



Order No. 23074

Type	W x D x H (mm)	 ¹⁾	Colour		
			Grey Order No.	Red Order No.	Blue Order No.
Tipping trolley PE	920 x 1320 x 625	300.00	23073	23072	23070
Tipping trolley PE	960 x 1440 x 825	500.00	15484	15483	13066
Tipping trolley PE	1145 x 1560 x 925	750.00	15487	15486	13067
Tipping trolley PE	1173 x 1586 x 1095	1000.00	23077	23076	23074
Lid PE Tipping trolley/container V 300 L	1380 x 960 x 395		23078	-	-
Lid PE Tipping trolley/container V 500 L	1510 x 990 x 550		22810	-	-
Lid PE Tipping trolley/container V 750 L	1630 x 1170 x 550		22812	-	-
Lid PE Tipping trolley/container V 1000 L	1655 x 1200 x 610		23079	-	-

1) Collection volume (l)



Order No. 13064

Tipping skip out of polyethylene

Collection and provision of warehouse goods

- Integrated inserts for transportation by forklift truck
- Optionally available with polyamide castors
- Made of resistant polyethylene
- Releasing the locking device immediately activates the tipping process
- Integrated spring mechanism limits the tipping process to approx. 90°, prevents the container for being damaged
- Load capacity:

Capacity 300 L and 500 L = 150 kg

Capacity 750 L and 1000 L = 250 kg



Order No. 23083




Order No. 13062



Order No. 23086



Order No. 23095

Type	W x D x H (mm)	 1)	Colour		
			Grey Order No.	Red Order No.	Blue Order No.
Tipping container PE without castors	920 x 1420 x 625	300.00	23083	23082	23080
Tipping container PE without castors	960 x 1530 x 790	500.00	15490	15489	13061
Tipping container PE without castors	1145 x 1650 x 890	750.00	15496	15495	13062
Tipping container PE without castors	1173 x 1660 x 1060	1000.00	23091	23090	23088
Tipping container PE with castors	920 x 1420 x 660	300.00	23087	23086	23084
Tipping container PE with castors	960 x 1530 x 830	500.00	15493	15492	13063
Tipping container PE with castors	1145 x 1650 x 925	750.00	15499	15498	13064
Tipping container PE with castors	1173 x 1660 x 1095	1000.00	23095	23094	23092
Lid PE Tipping trolley/container V 300 L	1380 x 960 x 395		23078	-	-
Lid PE Tipping trolley/container V 500 L	1510 x 990 x 550		22810	-	-
Lid PE Tipping trolley/container V 750 L	1630 x 1170 x 550		22812	-	-
Lid PE Tipping trolley/container V 1000 L	1655 x 1200 x 610		23079	-	-

1) Collection volume (l)



Drum transport systems



Order No. 23262

Safe and easy transport of drums

Polyethylene drum dollies

- Ideal for 200 litre steel drums and 220 litre polyethylene drums
- Liquid-tight and corrosion-resistant
- Easy transport with 2 polyamide swivel castors and 2 fixed castors (Ø 80 mm)
- With profiled floor for good stability during transport

Steel drum dollies

- Easy transport with 4 polyamide swivel castors (Ø 75 x 25 mm)
- For 200 litre drums

Steel drum trolley

- Effortless picking up and transporting of drums
- No need to tilt or drive under the full drum
- For 60- to 220-litre steel and plastic drums
- Sturdy steel and stainless steel construction in high-quality powder coating
- Optionally in electrically conductive version for use in potentially explosive atmospheres (zones 1, 2 IIA, IIB)




Order No. 23263



Order No. 13333



Order No. 40068

Type	W x D x H (mm)	 1)	Order No.
Drum dolly PE	720 x 800 x 225	300	23262
Drum dolly PE with drawbar	720 x 800 x 1135	300	23263
Drum dolly PE with apron with push-handle	720 x 800 x 1025	300	23264
Drum dolly PE conductive with apron with push-handle	720 x 800 x 1025	300	23265
Drum dolly steel	610 x 610 x 125	350	13333
Drum trolley steel	855 x 510 x 1405	350	40068
Drum trolley steel	855 x 510 x 1405	350	40069

1) Load capacity (kg)

Drum turner

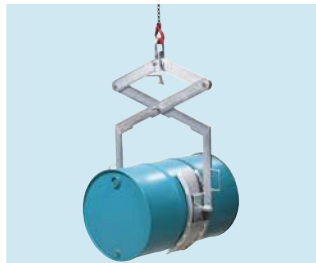
- Robust hot dip galvanised or painted version
- Steel drums can be transported, turned and tipped safely
- Turning range drum: > 360°



Version with clamp

- Steel drum lockable in both vertical and horizontal position

Order No. 19257



Version with drum gripper

- For vertical or horizontal transport of 200 litre steel drums
- Can be locked in horizontal position
- The drums can be turned in the gripper

Order No. 2881



Drum turning tongs horizontal

- For lifting and transporting 200 litre beaded or clamping ring drums
- With locking device

Order No. 13309



Drum lifting clamp

- Vertical or horizontal transport
- Also suitable for lifting a lying drum

Order No. 19262



Drum lifting tongs vertical

- For lifting and transporting 200 litre beaded or clamping ring drums
- Suitable for use with tightly packed drums or for loading safety and T-code recovery drums

Order No. 2689



Drum lifting tongs vertical

- For lifting and transporting 200 litre beaded or clamping ring drums
- Optimally suited for use with tightly packed drums

Order No. 2691



Drum hanger for horizontal drums

- For lifting and transporting horizontal 60- and 200-litre steel beaded drums
- Sturdy chain construction with 2 special gripping hooks for drum lifting

Order No. 9877



Drum gripper

- For vertical lifting and transporting of drums for 200 litre steel drums and 220 litre plastic L-ring drums, body height: 350 mm

Order No. 13274

Type	Material	W x D x H (mm)	Load capacity [kg]	Order No.
Drum turning tongs with clamp	steel powder-coated	700 x 560 x 850	300	19257
Drum turning tongs with scissors gripper	steel galvanized	1080 x 550 x 850	300	2881
Drum turning tongs horizontal	steel powder-coated	120 x 665 x 60	350	13309
Drum lifting clamp	steel galvanised and coated	130 x 170 x 700	500	19262
Drum lifting tongs vertical	steel powder-coated	550 x 250 x 210	350	2689
Drum lifting tongs vertical	steel powder-coated	440 x 100 x 800	350	2691
Drum hanger	steel galvanized	NaN x NaN x NaN	300	9877
Drum gripper vertical	steel painted	300 x 350 x 445	350	13274



Drum turner | Forklift attachment



Order No. 2542

Drum lifter for one or two drums

- Safe loading of various drums
- Height adjustable
- By driving up to the top rim of the drum and lifting the drum, the gripper will automatically grip the rim of the drum
- When placing the drum on the ground again, the locking device on the gripper releases automatically

Drum gripper

- For all grooved 200 litres steel drums
- As forklift extension
- The clamp closes automatically when the forklift truck lifts the drum
- Secured by wing screws



Order No. 2543

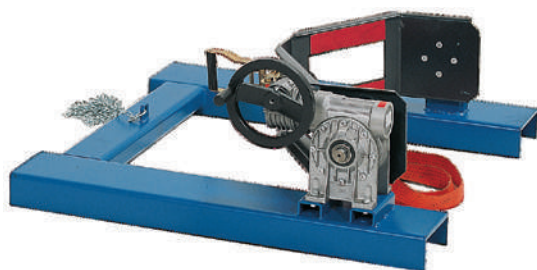
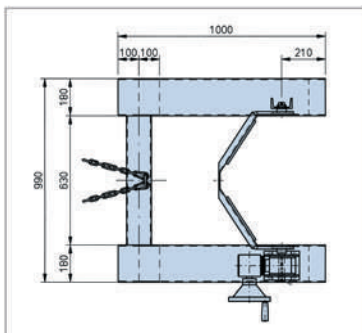


Order No. 19260

Model	Material	W x D x H (mm)	Load capacity (kg)	Order No.
Drum lifter for 1 drum	steel powder-coated	710 x 890 x 975	350	2542
Drum lifter for 2 drums	steel powder-coated	1050 x 1080 x 975	700	2543
Drum gripper for 1 drum	steel powder-coated	710 x 1100 x 160	350	19260

Drum turner

- suitable for drums with diameters from 380 mm up to 600 mm
- rotatable prism jaws are installed in the front area, all common drums can be transported due to manual lash device
- securing chain for mounting to the forklift truck
- rotation range drum: 180°, load capacity: 300 kg
- forklift pockets: 170 x 70 mm, fork spacing: 630 mm



Drum turner as attachment for forklift trucks
made of steel, with hand wheel
Order No. 2880



Drum turner as attachment for forklift trucks
made of steel, with endless chain
Order No. 19258

Drum turner with chain for 200 litre steel drums

- Easy to control and use from driver's seat of fork lift
- The continuous chain enables measured drum emptying from any height
- Secured to fork lift with retaining screws
- Forklift pockets: 180 x 65 mm, fork spacing: 620 mm
- Turning range drum: > 360°, load capacity: 300 kg

Model	Material	W x D x H (mm)	Load capacity (kg)	Order No.
Drum turner	steel powder-coated	1055 x 1000 x 455	300	2880
Drum turner with chain	steel powder-coated	990 x 720 x 510	300	19258



Drum lifter



Order No. 13330

Drum lifter Type GH

- For 200 litre steel ripped sumps
- Adjustable wheel base (720 mm up to 1390 mm entry width)
- Easy to manoeuvre in confined spaces
- Self closing gripping mechanism

Drum lifter type LE

- Suitable for use with 200 litre ripped drums
- The wheel base of the drum lifter is wide enough to push the lifter either side of Euro pallets to ensure that drums at the back of the pallet can be reached easily
- The special locking mechanism fixes onto the top of the drum to hold the drum in place

Drum lifter with gripper

- For 60 litres and 200 litres grooved and clamping ring steel drums
- Special locking mechanism: steel drum is gripped at the upper drum edge and safely held
- Adjustable gripper mechanism, ideal adaption to various drum sizes and loading positions
- Easy to move due to 2 swivel and 2 fixed castors



Order No. 19255



Order No. 23271

Type	Chassis	Material	W x D x H (mm)	Load capacity (kg)	Order No.
Drum lifter GH		steel powder-coated	900 x 1100 x 1885	350	19255
Drum lifter LE	wide	steel powder-coated	980 x 810 x 1180	250	13330
Drum lifter with gripper	narrow	steel painted	830 x 1140 x 1605	300	23266
Drum lifter with gripper	wide	steel painted	1200 x 1140 x 1605	300	2538
Drum lifter with gripper	wide	steel painted	1200 x 1100 x 2135	300	23271



Order No. 2539

Drum lifter with clamp

- 2 versions: clamp either suitable for 200 litre steel drums or universally suited to all 200–220 litre steel and plastic drums
- The clamp closes automatically
- With foot pump
- Easy to move due to 2 swivel and 2 fixed castors
- Articles 14683, 2539 and 23276 for 200-L steel drums
- Articles 32016 and 32018 für 200-/220-L steel and PE drums

Drum lifter with prism jaws

- Drum lifter to lift, turn, mix, controlled emptying and transport drums
- Gripping system with rotatable prism jaws enable the handling of various drum and container sizes
- Rotation range: > 360°
- The drum is raised to the correct height by hydraulic pump
- Lifting height up to 1400 mm (depending on the version)
- Mobile due to 2 swivel and 2 fixed castors (with locking device)



Order No. 23276



Order No. 2879

Type	Chassis	Material	W x D x H (mm)	Load capacity (kg)	Order No.
Drum lifter with clamp	narrow	powder-coated steel	830 x 1140 x 1605	300	14683
Drum lifter with clamp	wide	powder-coated steel	1200 x 1140 x 1605	300	2539
Drum lifter with clamp	wide	powder-coated steel	1200 x 1100 x 2135	300	23276
Drum lifter with clamp	narrow	powder-coated steel	830 x 1140 x 1605	300	32016
Drum lifter with clamp	wide	powder-coated steel	1200 x 1140 x 1605	300	32018
Drum lifter with prism jaws	narrow	powder-coated steel	830 x 1140 x 1605	300	23290
Drum lifter with prism jaws	wide	powder-coated steel	1200 x 1140 x 1605	300	23292
Drum lifter with prism jaws	wide	powder-coated steel	1200 x 1100 x 2135	300	2879



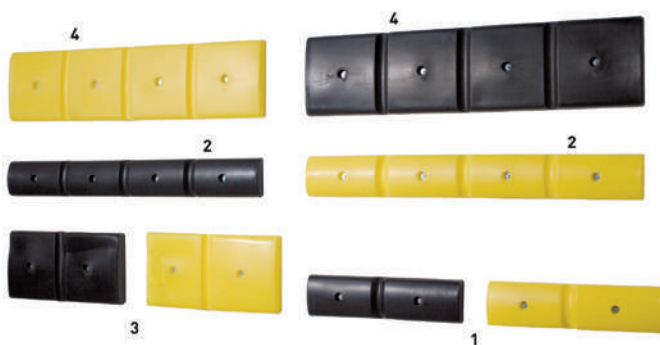
Protection profiles



Wall/corner protection profiles



Pillar protection profiles



Transport route protection

Protectors for walls and corners

- To prevent damage on walls and corners
- Made from robust polyethylene
- Optimal impact resistance even in cold weather
- A collision involving forklifts is cushioned so that possible damage to forklifts is also minimized
- Resistant to numerous aggressive chemicals
- Warning colours yellow/black
- 2 per set, incl. assembly materials

Pillar protectors

- Made from robust polyethylene
- Optimal impact resistance even in cold weather
- Can also be assembled one on top of another to protect the upper part of a pillar
- Reduces the impact caused by a forklift truck, for example, and also minimises any possible damage to the forklift truck
- Warning colours yellow/black
- Set of 2 profiles with socket connector



Pillar protection profiles

Protection profile type	Type	W x D x H (mm)	Colour	
			Yellow Order No.	Black Order No.
Wall	slim 1	500 x 50 x 125	23096	23097
Wall	slim 2	1000 x 50 x 125	23098	23099
Wall	wide 3	500 x 50 x 250	23100	23101
Wall	wide 4	1000 x 50 x 250	23102	23103
Corner	slim 5	250 x 125 x 250	23104	23105
Corner	wide 6	250 x 125 x 500	23106	23107
Pillar	160	360 x 360 x 500	23108	23109
Pillar	200	400 x 400 x 500	23110	23111
Pillar	240	440 x 440 x 500	23112	23113
Pillar	300	500 x 500 x 500	23114	23115

Packaging Unit = 2



Grit container made of polyethylene

- Very sturdy construction, high impact resistance
- Optionally with dispensing hatch
- Weatherproof
- Entirely made of polyethylene, durable and corrosion-free
- Lid can be removed without tools
- Containers are lockable (lock not included in the scope of delivery)
- Available in light grey with three different lid colours



Order No. 13068



Order No. 13366



Order No. 13071

	Capacity [ltr.]				
	100	200	400	550	700
Model	without dispensing hatch	without dispensing hatch	without dispensing hatch	without dispensing hatch	without dispensing hatch
W x D x H (mm)	975 x 705 x 460	975 x 705 x 665	1210 x 785 x 780	1400 x 1070 x 748	1400 x 1070 x 930
Order No. Yellow	13296	12495	12496	13068	13069
Order No. Green	13298	13301	13328	13368	13358
Order No. Orange	13297	13300	13315	13369	13359

	Capacity [ltr.]				
	100	200	400	550	700
Model	with dispensing hatch	with dispensing hatch	with dispensing hatch	with dispensing hatch	with dispensing hatch
W x D x H (mm)	975 x 705 x 460	975 x 705 x 665	1210 x 785 x 780	1400 x 1070 x 748	1400 x 1070 x 930
Order No. Yellow	13393	12497	11515	13070	13071
Order No. Green	13395	13307	13388	13365	13342
Order No. Orange	13394	13306	13389	13366	13343

Accessory castor set	100/200 litre	400 litre	550 litre
Order No.	12498	12500	13072

Accessory plinth feet	100/200 litre	400 litre	550 litre
Order No.	12499	12501	13073





Order No. 11315



Order No. 9934



Order No. 9930



Order No. 9933

Oil Sorbents – water repellant, safe absorption of oils, petrol, diesel, etc.

- Very strong durability
- Suitable for heavy and long-lasting use
- Tightly woven fibres, high abrasion resistance and low-lint surface
- Outstanding absorption performance
- Large absorption capacity (up to 16 time of own weight)

Material thickness:

- Light – for smaller leakages and prevention
- Heavy – for larger leakages or absorption of puddles
- No unnecessary material usage – perforated rolls and mats, take only as much material as necessary
- Minimised risk of dripping – outstanding ability of absorbent surface to retain liquid

Type	Material thickness	Absorption (litres/PU)			Order No.
Roll	light	250.00	90 m x 40 cm	2	11315
Roll	heavy	250.00	45 m x 80 cm	1	9936
Roll	heavy	250.00	45 m x 40 cm	2	9937
Mat	light	136.00	46 cm x 40 cm	200	11327
Mat	heavy	129.00	46 cm x 40 cm	100	9934
Sock		57.00	1.2 m x 75 mm	15	9930
Sock		64.00	3 m x 75 mm	6	9931
Cushions		46.00	46 cm x 46 cm	10	9932
Cushions		35.00	25 cm x 25 cm	20	9933
Drum platform	heavy	42.00	Ø 560 mm	25	14367
Accessories					Order No.
Wall bracket	for rolls with a width of 40 cm, with cutting edge				9905
Roll stand	for rolls with a width of 40 cm, with cutting edge				9908
Roll stand	for rolls with a width of 80 cm, with cutting edge (also suitable for wall mounting)				9909



Order No. 11314



Order No. 9951



Order No. 9943

Universal Sorbents – safe absorption of oils, water, coolants and non-aggressive chemicals

- Very strong durability
- Suitable for heavy and long-lasting use
- Tightly woven fibres, high abrasion resistance and low-lint surface
- Outstanding absorption performance
- Large absorption capacity (up to 16 times of own weight)

Material thickness:

- Light – for smaller leakages and prevention
- Heavy – for larger leakages or absorption of puddles
- No unnecessary material usage – perforated rolls and mats, take only as much material as necessary
- Minimised risk of dripping – outstanding ability of absorbent surface to retain liquid



Order No. 9954

Type	Material thickness	Absorption (litres/PU)			Order No.
Roll	light	242.00	90 m x 40 cm	2	11314
Roll	light	242.00	90 m x 80 cm	1	11317
Roll	heavy	242.00	45 m x 80 cm	1	9950
Roll	heavy	242.00	45 m x 40 cm	2	9949
Sock		64.00	3 m x 75 mm	6	11347
Sock		5700	1.2 m x 75 mm	15	9954
Mat	light	144.00	46 cm x 40 cm	200	11326
Mat	heavy	136.00	46 cm x 40 cm	100	9951
Cushions		46.00	46 cm x 46 cm	10	9943
Cushions		35.00	25 cm x 25 cm	20	9944
Drum platform	heavy	42.00	Ø 560 mm	25	9953

Accessories				Order No.
Wall bracket	for rolls with a width of 40 cm, with cutting edge			9905
Roll stand	for rolls with a width of 40 cm, with cutting edge			9908
Roll stand	for rolls with a width of 80 cm, with cutting edge (also suitable for wall mounting)			9909





Order No. 9913



Order No. 9917



Order No. 9910

Special Sorbents – safe absorption of acids, alkalis, aggressive chemicals and oil

- Very strong durability
- Suitable for heavy and long-lasting use
- Tightly woven fibres, high abrasion resistance and low-lint surface
- Outstanding absorption performance
- Large absorption capacity (up to 16 times of own weight)

Material thickness:

- Light – for smaller leakages and prevention
- Heavy – for larger leakages or absorption of puddles
- No unnecessary material usage – perforated rolls and mats, take only as much material as necessary
- Minimised risk of dripping – outstanding ability of absorbent surface to retain liquid



Order No. 9915

Type	Material thickness	Absorption (litres/PU)	L x W	Packaging unit (PU)	Order No.
Roll	light	268.00	90 m x 80 cm	2	11319
Roll	heavy	228.00	45 m x 70 cm	1	9919
Roll	heavy	228.00	45 m x 40 cm	1	9913
Sock		85.00	1.2 m x 75 mm	15	9914
Sock		84.00	3 m x 75 mm	6	9915
Cushions		57.00	25 cm x 25 cm	20	9910
Cushions		78.00	46 cm x 46 cm	10	9916
Mat	heavy	114.00	46 cm x 40 cm	100	9917
Mat	light	163.00	46 cm x 40 cm	200	9918
Accessories					Order No.
Wall bracket	for rolls with a width of 40 cm, with cutting edge				9905
Roll stand	for rolls with a width of 40 cm, with cutting edge				9908
Roll stand	for rolls with a width of 80 cm, with cutting edge (also suitable for wall mounting)				9909

Sorbents | Mobile Box, Transport Trolley, Refill Set



PREMIUM transport trolley special, W x D x H (mm): 410 x 590 x 950
Order No. 14413

PREMIUM Sorbents emergency set in trolley

- Content: 6 cushions, 3 socks, 20 mats, 3 pair protective gloves, 5 plastic bags, 1 pair full vision safety glasses with elastic strap

PREMIUM mobile box

- Content: 6 cushions, 3 socks, 20 mats, 1 pair protective gloves

Handy sized mobile spill kit for fast access in case of leakage. The chosen content of the box provides the necessary help in serious accidents to absorb water-pollutant substances.

Oil Sorbents

Safe absorption of oils, petrol, diesel, hydrocarbon-based liquids etc., water repellent

Universal Sorbents

Safe absorption of oils, water, coolants and non-aggressive chemicals

Special Sorbents

Safe absorption of acids, alkalis, aggressive chemicals and oil



PREMIUM mobile box universal, W x D x H (mm): 610 x 400 x 340
Order No. 14406



Refill kits for the mobile box (without protective gloves)

Type		W x D x H (mm)	Material	Order No.
Mobile box	Oil sorbents	610 x 400 x 340	polyethylene	14405
Mobile box	Universal sorbents	610 x 400 x 340	polyethylene	14406
Mobile box	Special sorbents	610 x 400 x 340	polyethylene	14407
Transport trolley	Oil sorbents	410 x 590 x 950	polyethylene	14411
Transport trolley	Universal sorbents	410 x 590 x 950	polyethylene	14412
Transport trolley	Special sorbents	410 x 590 x 950	polyethylene	14413

Accessories		Order No.
Refill kit for mobile box	Oil sorbents	14408
Refill kit for mobile box	Universal sorbents	14409
Refill kit for mobile box	Special sorbents	14410
Refill kit for trolleys	Oil sorbents	14414
Refill kit for trolleys	Universal sorbents	14415
Refill kit for trolleys	Special sorbents	14416



Granules



Universal coarse grain

- 1-3 mm grain size
- 20 kg bag binds up to 16 l heating oil
- Suitable for solid surfaces
- Optimum slip resistance even when completely saturated
- For indoors and outdoors



Universal fine grain

- 0.5-1 mm grain size
- 20 kg bag binds up to 18 l heating oil
- Penetrates small depressions and cracks
- Best suited for large contact with the surface and fast absorption (e.g. traffic surfaces)
- Optimum slip resistance even when completely saturated



Ultra fine grain

- 0.3-0.7 mm grain size
- 10 kg bag binds up to 11 l heating oil
- Penetrates the finest recesses and cracks
- Ideally suited for applications where little waste and very high suction power is required

Granulate – to set oils, alkalis, lipids, fuels, lacquers etc.

- Test certificates (MPA-NRW type III R)
- Successfully tested and licensed for the usage on traffic areas



Granulate universal	Absorption (litres/PU)	Weight (kg)	Order No.
Granulate universal ultra fine grain (packaging unit: 1x 10 kg bag)	11.00	10	14394
Granulate universal ultra fine grain (packaging unit: 3 x 10 kg bags)	33.00	30	18165
Granulate universal fine grain (packaging unit: 1x 20 kg bag)	18.00	20	9906
Granulate universal fine grain (packaging unit: 3 x 20 kg bags)	54.00	60	18453
Granulate universal coarse grain (packaging unit: 1x 20 kg bag)	16.00	20	9956
Granulate universal coarse grain (packaging unit: 3 x 20 kg bags)	48.00	60	18468
Accessories	Material	Order No.	
Hand-shovel small	polypropylene	14369	
Hand-shovel big	polypropylene	14370	

Sealing mats, barrier boundaries



Sealant mat, W x D x H (mm): 800 x 800 x 8
Order No. 13098

Flexible sealant mat – rapid protection in case of leaking liquids

- Prevents in case of fire or emergency a contamination of the surroundings with waterpollutant liquids
- Incl. protection film with integral handles
- Resistant to water, hydrocarbons and most chemicals
- The extremely dense, flexible material adhering to the underside adapts perfectly to the nature of the ground
- Can be used several times



Separation barrier, W x L x H (mm): 70 x 3000 x 100
Order No. 11365

Flexible separation barrier – rapid protection in case of leaking liquids

- Stick to ground and protects the environment from escaping liquids (e.g. for drains)
- Consists of a special plastic mixture
- Resistant to water, hydrocarbon and most chemicals
- Reusable (can be washed with soapy water or detoxicated)
- For all smooth substrates



Separation barrier, W x H (mm): 400 x 50
Order No. 13096

Storage box made of polyethylene

- With handle and lid
- Can be wall mounted



Type	W x D x H (mm)	Material	Order No.
Separation barrier	70 x 3000 x 100	polyurethane	11365
Separation barrier	45 x 2000 x 50	polyurethane	13093
Separation barrier	400 x 50	polyurethane	13096
Sealant mat	800 x 800 x 8	polyurethane	13098
Sealant mat	1000 x 1000 x 8	polyurethane	9901
Sealant mat	400 x 400 x 8	polyurethane	9902
Sealant mat	1200 x 1200 x 8	polyurethane	9903
Sealant mat	600 x 600 x 8	polyurethane	9904

Storage boxes	W x L x H (mm)	Material	Order No.
for length 400 mm	190 x 475 x 210	polyethylene	13097
for length 600 mm	190 x 675 x 210	polyethylene	13094
for length 800 mm	190 x 875 x 210	polyethylene	13101
for length 1000 mm	190 x 1080 x 210	polyethylene	13102
for length 1200 mm	190 x 1280 x 210	polyethylene	13095



EXPERTISE STRAIGHT FROM THE MANUFACTURER

Benefit from our expert knowledge – whether at national or international level. All our employees are highly trained and have expertise in their respective fields. In Germany, for example, our consultants are independent BDSF experts and

abroad they have expertise in the local legal situation. Tailor-made and legally compliant solutions for every customer need are the result.



We raise awareness for the handling of hazardous materials

This trains and creates awareness for the routine handling of hazardous substances – for more sustainable safety in everyday work. In the asecos academy, we offer further training and seminars on the topics of hazardous material storage and handling. Whether basic knowledge or special topic, whether user, planner, architect or authorised asecos specialist dealer – the **asecos academy** passes on well-founded expert knowledge in a practical and target group-oriented manner.

Our academy concept is modular, i.e. the individual components can be combined to create a customised training offer: www.asecos.com/academy

asecos world – the heart of the academy!

Visitors to the asecos world can test, refresh and expand their knowledge of hazardous materials in guided tours. Rather than just focusing on theory, the asecos learning concept offers a unique, independent, hands-on approach which benefits the acquisition of knowledge. The combination of theory and practice offered in the asecos world is comprehensive and interactive.

A tour of the asecos world can be individually adapted to the respective level of knowledge of the visitor group.

Interested readers can find sound specialist knowledge in the asecos Redpaper series and in our multilingual HazMat Guides at www.asecos.com, on our blog asecos.com/blog or in our product videos on youtube.com/asecosChannel.



OUR MEDIA RANGE



Customised and individual

The new asecos product configurator is a valuable tool. You can use the online tool to customise your own safety storage cabinet, including interior equipment, dimensions, and design – your product is then displayed and you can request an offer. Get an overview of our extensive asecos product range, and easily find the right cabinet to meet your needs. Test the configurator now at: www.asecos-configurator.com

Our data service

Our product configurator provides you with technical specifications, drawings, BIM data, product images, tender texts, operating manuals, certificates, test reports and much more. Simply structured and easily accessible: At the end of each configuration, all common data formats to assist in designing your laboratory, are held ready for your use.

Discover asecos safety cabinets virtually!

In addition to our local showroom at our company headquarters in Gründau, you can now also experience asecos products virtually: At www.asecos-showroom.com you can easily click through the 3D navigation of our online showroom and take a look at detailed product information such as explanatory videos or technical drawings.



asecos product range

Our product range includes a wide range of products for the safe storage, extraction and handling of hazardous materials.

You can find more information at www.asecos.com.



EXTRACTION AND FILTER SYSTEMS FOR HAZARDOUS VAPOURS





SERVICE AND MAINTENANCE – OUT AND ABOUT FOR YOUR SAFETY

SOLUTIONS FOR THE PROTECTION OF NON-SMOKERS AND AIR POLLUTION CONTROL



Dimensions, weights and illustrations

Dimensions and weights are approximate values.
Illustrations may contain special equipment.
Products will be delivered without decoration material.

Carrier and supply

For the delivery of the product, we choose different carriers, e.g. parcel service, general cargo or special freight forwarding, depending on the product characteristics. Taking size and weight into account, we select the most favourable shipping method for you in each case.
For delivery by freight forwarder, unhindered access with a 20-tonne truck must be possible.

Price and delivery information

Binding price information and delivery times are available from your respective seller/trading partner.

Others

In addition, we refer to the General Terms and Conditions of Business of asecos GmbH at www.asecos.com as well as to the terms and conditions of sale of your respective seller/trading partner.

May 2022

© The content of this catalogue is copyright protected. All rights resulting from this copyright are reserved by the publisher. This applies in particular to reproduction, editing, translating, microfilming and the storage and processing in electronic systems.
All information in this catalogue has been compiled to the best of our knowledge. However, please understand that we cannot accept any liability for errors and mistakes.
All data is for information purposes only. Each individual case should consider the respective valid legislation and it is important to observe country-specific rules and regulations that are applicable.

Publisher
asecos GmbH

www.asecos.global

asecos GmbH

Safety and Environmental Protection
Weierfeldsiedlung 16-18
DE-63584 Gründau

☎ +49 6051 92200
☎ +49 6051 922010
@ info@asecos.com

asecos Ltd.

Safety and Environmental Protection
5 Eastgate Business Centre
Eastern Avenue
Burton on Trent, Staffordshire
DE13 0AT

☎ +44 7880 435436
☎ +49 6051 922010
@ info@asecos.co.uk

asecos bv

Veiligheid en milieubescherming
Tuinderij 15
NL-2451 GG Leimuiden

☎ +31 172 506476
☎ +31 172 506541
@ info@asecos.nl

asecos

Safety and Environmental Protection Inc.
19109 West Catawba Avenue, Suite 200
Cornelius, NC 28031
USA

☎ +1 704 8973820
☎ +49 6051 922010
@ info@asecos.com

asecos SARL

Sécurité et protection de l'environnement
1, rue Pierre Simon de Laplace
FR-57070 Metz

☎ +33 3 87 78 62 80
☎ +33 3 87 78 43 19
@ info@asecos.fr

asecos Schweiz AG

Sicherheit und Umweltschutz
Gewerbe Brunnmatt 5
CH-6264 Pfaffnau

☎ +41 62 754 04 57
☎ +41 62 754 04 58
@ info@asecos.ch

asecos S.L.

Seguridad y Protección del
Medio Ambiente
CIM Vallès, C/ Calderí S/N
Oficinas 75 a 77
ES-08130 - Santa Perpètua de Mogoda
Barcelona

☎ +34 935 745911
☎ +34 935 745912
@ info@asecos.es